

**BULLDOG TWO DEPARTURE (OBSTACLE)(BLDG 2 • VISTA)** CAMP PENDLETON MCAS (MUNN FLD) (KNFG) OCEANSIDE, CALIFORNIA

AL-5985 [USN]

Rwy	Knots	60	120	180	240	300	360
3 (C)	V/V(fpm)	486	972	1458	1944	2430	2916
21 (B)	V/V(fpm)	442	884	1326	1768	2210	2652

ATIS ★ 285.45  
 CLNC DEL  
 134.675 271.6  
 GND CON  
 134.675 360.2  
 TOWER ★  
 128.775 340.2  
 SOCAL DEP CON  
 127.3 323.0

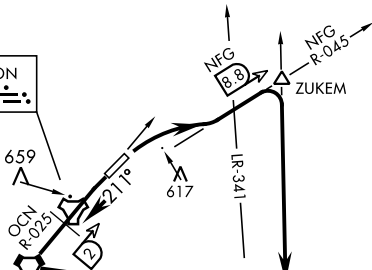
Minimum Climb Rate

(C) to 800

(B) to 1300

**NOT FOR CIVIL USE**

CAMP PENDLETON  
 Chan 55 NFG



RWY 3: RNAV required Zुकem to VISTA. Do not exceed 240 KIAS until VISTA.

OCEANSIDE  
 115.3 OCN  
 Chan 100

MISSION BAY  
 117.8 MZB  
 Chan 125

**DEPARTURE ROUTE DESCRIPTION**

**TAKE-OFF RWY 3:** Climbing right turn to intercept NFG TACAN R-045 to Zुकem then right turn direct VISTA. Cross VISTA at 4000 or assigned altitude.

**TAKE-OFF RWY 21:** Climb on heading 211° to intercept OCN VORTAC R-025 then direct OCN then left turn to intercept OCN R-083 direct VISTA. Cross VISTA at 4000 or assigned altitude.