

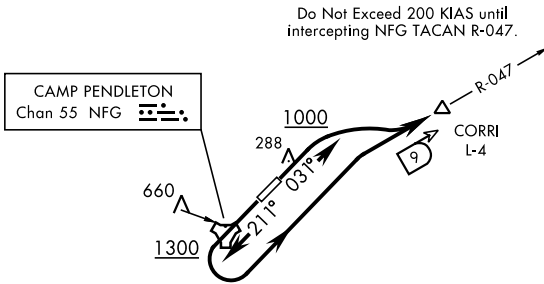
CORRI THREE DEPARTURE (OBSTACLE)(CORRI3•CORRI)

AL-5985 [USN]

Rwy	Knots	60	120	180	240	300	360
3	V/V(fpm)	335	670	1005	1340	1675	2010
21	V/V(fpm)	442	884	1326	1768	2210	2652

Minimum Climb Rate to 1000

ATIS ★ 285.45  
 CLNC DEL  
 134.675 271.6  
 GND CON  
 134.675 360.2  
 TOWER★  
 128.775 340.2  
 SOCAL DEP CON  
 127.3 323.0



**RADAR REQUIRED**  
**NOT FOR CIVIL USE**  
**NOT FOR USE BY CAT D/E AIRCRAFT**

DEPARTURE ROUTE DESCRIPTION

**TAKE-OFF RWY 3:** Climb on heading 031° to 1000 then climbing right turn to 3800 and intercept NFG TACAN R-047 to CORRI.

**TAKE-OFF RWY 21:** Climb on heading 211° to 1300 then climbing left turn to 3800 and intercept NFG TACAN R-047 to CORRI.

SW-3, 20 FEB 2025 to 20 MAR 2025

SW-3, 20 FEB 2025 to 20 MAR 2025