

TACAN RWY 3

VORTAC OCN 115.3 Chan 100	APCH CRS 026°	Rwy Idg TDZE 67 Arpt Elev 78	6005
---	-------------------------	--	-------------

[USN]

CAMP PENDLETON MCAS (MUNN FLD) (KNFG)

▼ Procedure not authorized at night when VGSI inop.
Visibility reduction by helicopters not authorized.

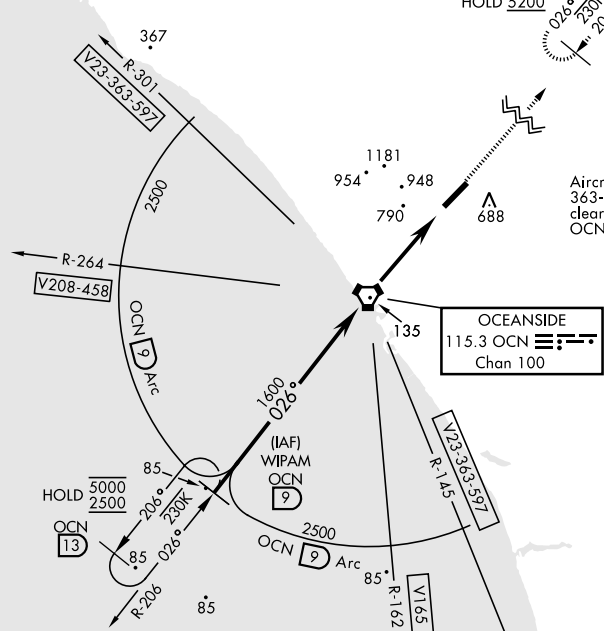
MISSED APPROACH: Climb to 5200 and intercept the
OCN VORTAC R-026 direct CUPIS and hold. Climb in hold.

ATIS ★ 285.45	SOCAL APP CON 127.3 323.0	TOWER ★ 128.775 340.2	GND CON 134.675 360.2	CLNC DEL 134.675 271.6	ASR/PAR
-------------------------	-------------------------------------	---------------------------------	---------------------------------	----------------------------------	---------

Knots	60	120	180	240	300	360
V/V(fpm)	275	550	825	1100	1375	1650
Min climb of 275 ft/NM to 3500 - Controlling Obstacle 2778						

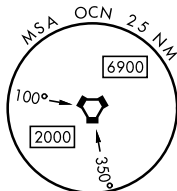
CAUTION: High terrain on final approach.

20:1 penetrations: Unlit towers 1.5 NM - 1.7 NM from threshold, 1400 ft - 2000 ft left of threshold. Tallest tower 595 ft MSL. Unlit terrain 639 ft MSL, 1.6 NM from threshold, 2085 ft left of course. Unlit terrain 587 ft MSL, 1.7 NM from threshold, 775 ft left of course.



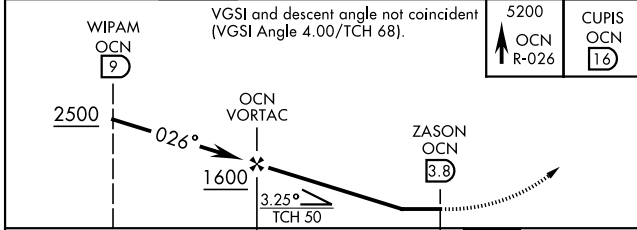
Aircraft inbound to OCN on V23-363-597, V165, V208-458 will be cleared to intercept and proceed via OCN 9 mile arc to WIPAM at 2500 min.

NOT FOR CIVIL USE

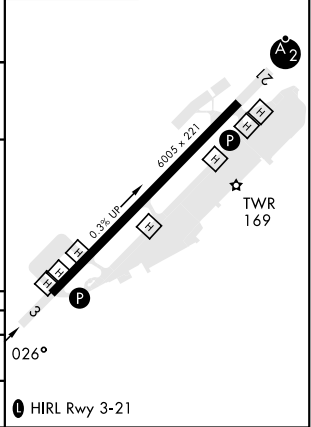


EMERG SAFE ALT 100 NM 13,600

VGSI and descent angle not coincident
(VGSI Angle 4.00/TCH 68).



ELEV	78	TDZE	67
------	----	------	----



CATEGORY	A	B	C	D
S-3	1060-1¼ 993 (1000-1¼)	1060-1½ 993 (1000-1½)	1060-3	993 (1000-3)
CIRCLING	1060-1¼ 993 (1000-1¼)	1260-1½ 1182 (1200-1½)	1500-3	1422 (1500-3)

HIRL Rwy 3-21

TACAN RWY 3

SW-3, 20 FEB 2025 to 20 MAR 2025

SW-3, 20 FEB 2025 to 20 MAR 2025