

WAAS CH <b>40324</b> <b>W19A</b>	APP CRS <b>193°</b>	Rwy Idg TDZE Apt Elev	<b>5003</b> <b>804</b> <b>817</b>
--	------------------------	-----------------------------	---

# RNAV (GPS) RWY 19

DOUGLAS HUNTER FLD (1M5)

RNP APCH.

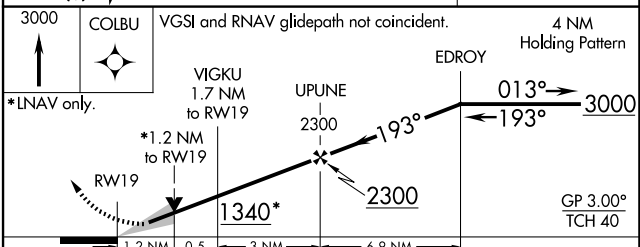
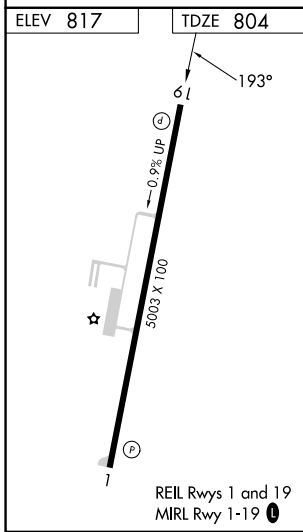
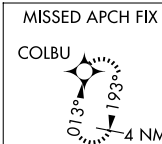
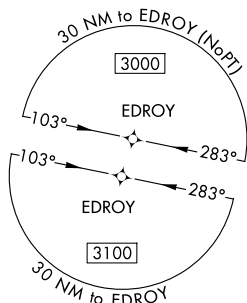
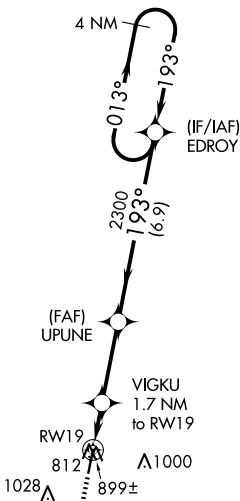
**⚠** For uncompensated Baro-VNAV systems, LNAV/VNAV NA below -16°C or above 54°C. Baro-VNAV and VDP NA when using Bowling Green altimeter setting. When local altimeter setting not received, use Bowling Green altimeter setting and increase LPV DA to 1144 and all visibilities ¼ mile; increase all LNAV/VNAV DA to 1184 and all visibilities ¼ mile; increase all MDA 100 feet and increase LNAV Cat C/D visibility ⅜ mile.

MISSED APPROACH: Climb to 3000 direct COLBU and hold.

AWOS-3PT  
**118.175**

NASHVILLE APP CON  
**119.35 372.0**

UNICOM  
**122.975 (CTAF)**



CATEGORY	A	B	C	D
LPV DA		1054-1	250 (300-1)	
LNAV/VNAV DA		1094-1½	290 (300-1½)	
LNAV MDA		1160-1	356 (400-1)	

SE-1, 20 FEB 2025 to 20 MAR 2025

SE-1, 20 FEB 2025 to 20 MAR 2025