

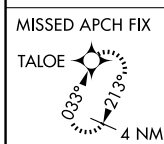
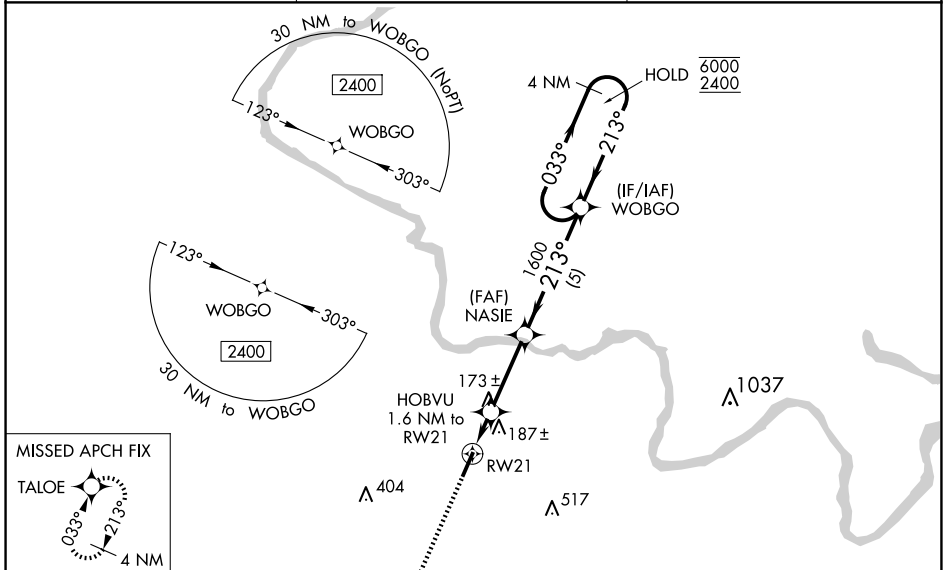
WAAS CH 86237 W21A	APP CRS 213°	Rwy Idg TDZE Apt Elev	5000 75 75
--	------------------------	-----------------------------	---------------------------------------

RNAV (GPS) RWY 21

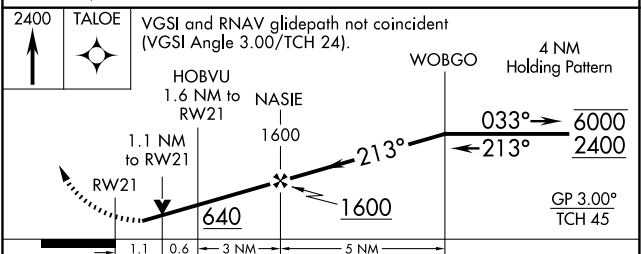
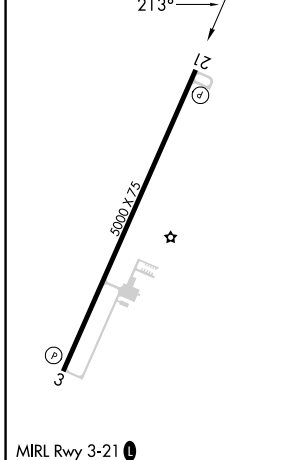
MARTIN COUNTY (MCZ)

RNP APCH - GPS.		MISSED APPROACH: Climb to 2400 direct TALOE and hold, continue climb-in-hold to 2400.
	Circling Rwy 3 NA at night. For uncompensated Baro-VNAV systems, LNAV/VNAV NA below -15°C or above 54°C.	

AWOS-3P 118.65	WASHINGTON CENTER 123.85 279.65	UNICOM 122.8 (CTAF) 0
--------------------------	---	---------------------------------



ELEV 75	TDZE 75
---------	---------



CATEGORY	A	B	C	D
LPV DA		383-1	308 (400-1)	
LNAV/VNAV DA		343-1	268 (300-1)	
LNAV MDA		440-1	365 (400-1)	
CIRCLING	500-1 425 (500-1)	540-1 465 (500-1)	680-1¾ 605 (700-1¾)	880-2½ 805 (900-2½)

SE-2, 20 FEB 2025 to 20 MAR 2025

SE-2, 20 FEB 2025 to 20 MAR 2025