

VOR/DME BSV <b>114.05</b> Chan <b>87</b> (Y)	APP CRS <b>127°</b>	Rwy Idg TDZE Apt Elev <b>1164</b>	<b>N/A</b> <b>N/A</b> <b>1164</b>
--	------------------------	---	---

# VOR-A

CARROLL COUNTY-TOLSON (T50)

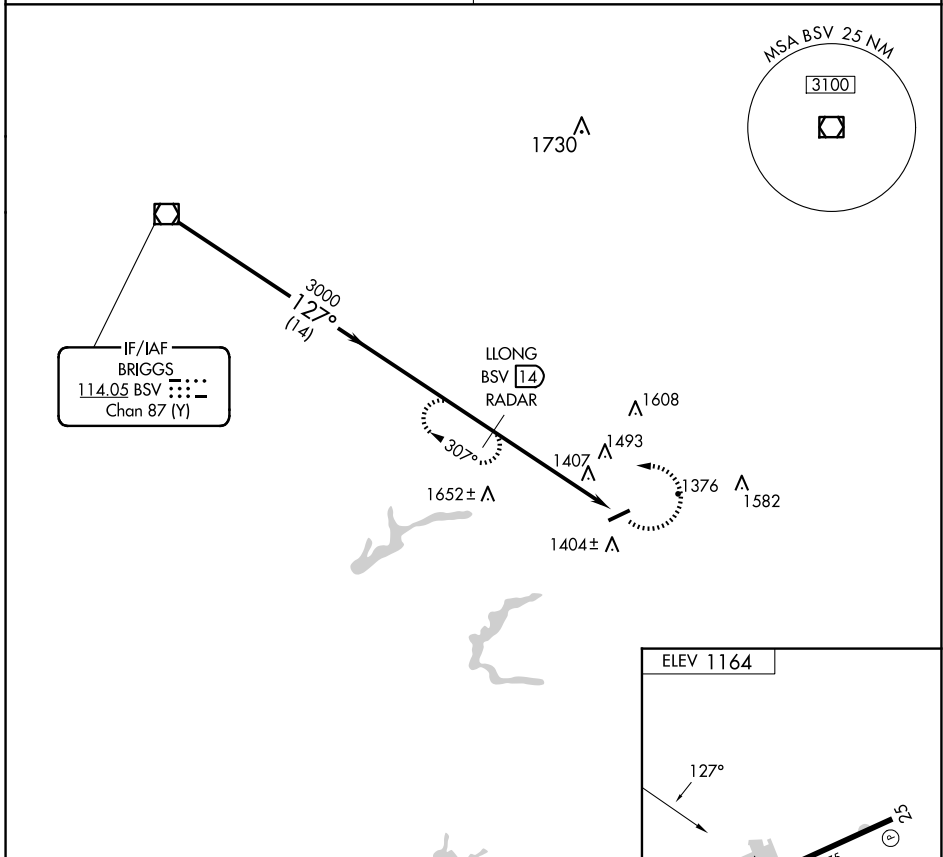
DME or RADAR required.

Procedure NA at night. Use Akron-Canton altimeter setting; when not received, use New Philadelphia altimeter setting and increase MDA 20 feet.

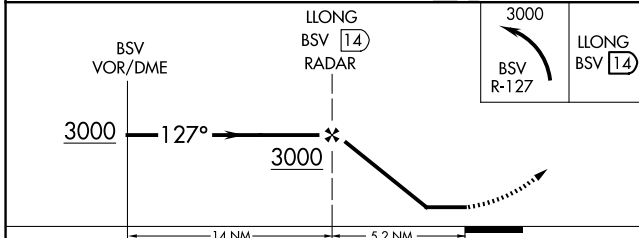
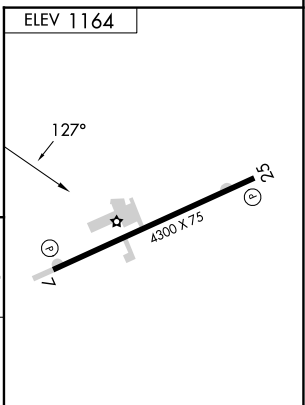
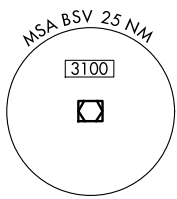
MISSED APPROACH: Climbing left turn to 3000 on BSV VOR/DME R-127 to LLONG/BSV 14 DME/RADAR and hold.

CLEVELAND APP CON ★  
**125.5 371.875**

UNICOM  
**122.7** (CTAF) **1**



IF/IAF  
BRIGGS  
114.05 BSV  
Chan 87 (Y)



REIL Rwys 7 and 25 **1**  
MIRL Rwy 7-25 **1**

FAF to MAP 5.2 NM	
Knots	60 90 120 150 180
Min:Sec	5:12 3:28 2:36 2:05 1:44

CATEGORY	A	B	C	D
CIRCLING	1940-1	777 (800-1)	NA	

# VOR-A

EC-2, 20 FEB 2025 to 20 MAR 2025

EC-2, 20 FEB 2025 to 20 MAR 2025