

GARLAND FIVE DEPARTURE  
(GARL5.TT) 25JAN24

CLEBURNE, TEXAS  
CLEBURNE RGNL (CPT)  
25JAN24

LONE STAR DEP CON  
135.975 379.9  
CTAF  
122.8

**TOP ALTITUDE:  
ASSIGNED BY ATC**

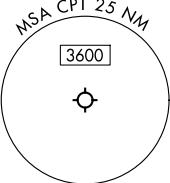
**RADAR and DME required.**

**TAKEOFF MINIMUMS**

Rwy 15: Standard.  
Rwy 33: 300-1½ or standard with minimum climb of 422'/NM to 1200.

NOTE: SOLDO Transition: ATC assigned.

MAVERICK  
113.1 TTT  
Chan 78

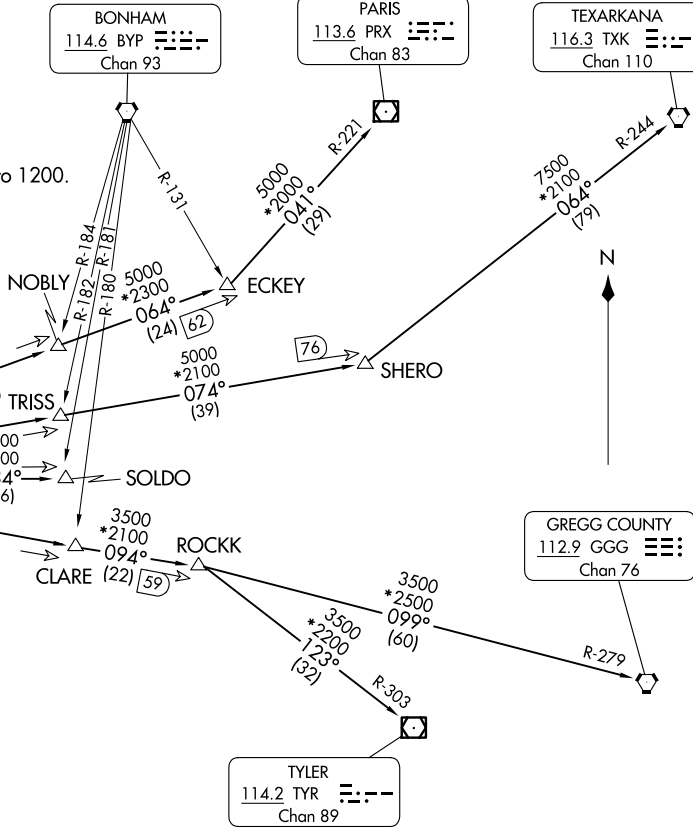


NOTE: Chart not to scale.

BONHAM  
114.6 BYP  
Chan 93

PARIS  
113.6 PRX  
Chan 83

TEXARKANA  
116.3 TXK  
Chan 110



(GARL5.TT) 24305  
GARLAND FIVE DEPARTURE

AL-6000 (FAA)

CLEBURNE RGNL (CPT)  
CLEBURNE, TEXAS

(CONTINUED ON FOLLOWING PAGE)

# GARLAND FIVE DEPARTURE



## DEPARTURE ROUTE DESCRIPTION

When entering controlled airspace, fly assigned heading for RADAR vectors to appropriate route. Maintain ATC assigned altitude.

GREGG COUNTY TRANSITION (GARL5.GGG): From over TTT VOR/DME on TTT R-094 to ROCKK, then on GGG R-279 to GGG VORTAC.

PARIS TRANSITION (GARL5.PRX): From over TTT VOR/DME on TTT R-064 to ECKEY, then on PRX R-221 to PRX VOR/DME.

SOLDO TRANSITION (GARL5.SOLDO): From over TTT VOR/DME on TTT R-084 to SOLDO.

TEXARKANA TRANSITION (GARL5.TXK): From over TTT VOR/DME on TTT R-074 to SHERO, then on TXK R-244 to TXK VORTAC.

TYLER TRANSITION (GARL5.TYR): From over TTT VOR/DME on TTT R-094 to ROCKK, then on TYR R-303 to TYR VOR/DME.

SC-2, 20 FEB 2025 to 20 MAR 2025

SC-2, 20 FEB 2025 to 20 MAR 2025