

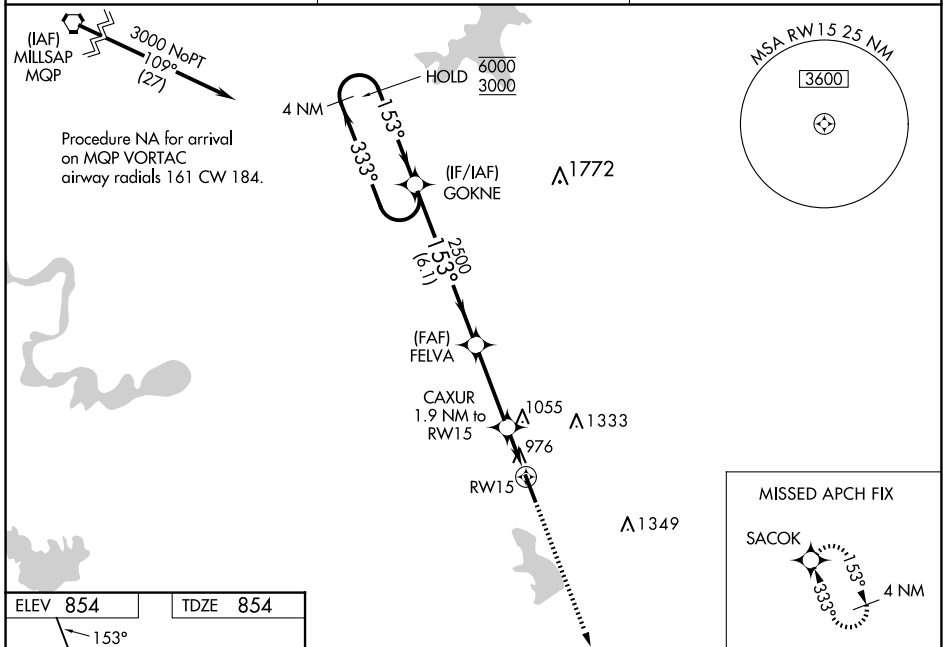
WAAS CH <b>61331</b> <b>W15A</b>	APP CRS <b>153°</b>	Rwy Idg TDZE Apt Elev	<b>5512</b> <b>854</b> <b>854</b>
--	------------------------	-----------------------------	---

# RNAV (GPS) RWY 15

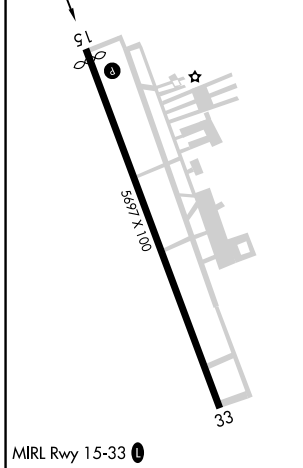
CLEBURNE RGNL (CPT)

RNP APCH.	MISSED APPROACH: Climb to 3000 direct SACOK and hold.
<p>▼ For uncompensated Baro-VNAV systems, LNAV/VNAV NA below -16°C or above 54°C. Rwy 15 helicopter visibility reduction below ¾ SM NA.</p> <p>▲</p>	

AWOS-3 <b>119.525</b>	LONE STAR APP CON <b>135.975 379.9</b>	UNICOM <b>122.8 (CTAF) 0</b>
--------------------------	---	---------------------------------



ELEV <b>854</b>	TDZE <b>854</b>
-----------------	-----------------



4 NM Holding Pattern	GOKNE	FELVA	CAXUR	SACOK
6000	3000	2500	1.9 NM to RWY 15	3000
GP 3.00° TCH 39	333°	153°	153°	
	6.1 NM	3.2 NM	1.9 NM	
		*1480		
CATEGORY	A	B	C	D
LPV DA		1240-1 <sup>3</sup> / <sub>8</sub>	386 (400-1 <sup>3</sup> / <sub>8</sub> )	
LNAV/VNAV DA		1397-1 <sup>7</sup> / <sub>8</sub>	543 (600-1 <sup>7</sup> / <sub>8</sub> )	
LNAV MDA	1360-1	506 (600-1)	1360-1 <sup>3</sup> / <sub>8</sub>	506 (600-1 <sup>3</sup> / <sub>8</sub> )
CIRCLING	1400-1	546 (600-1)	1680-2 <sup>1</sup> / <sub>2</sub> 826 (900-2 <sup>1</sup> / <sub>2</sub> )	1700-2 <sup>3</sup> / <sub>4</sub> 846 (900-2 <sup>3</sup> / <sub>4</sub> )

SC-2, 20 FEB 2025 to 20 MAR 2025

SC-2, 20 FEB 2025 to 20 MAR 2025