

RNAV (GPS) RWY 17

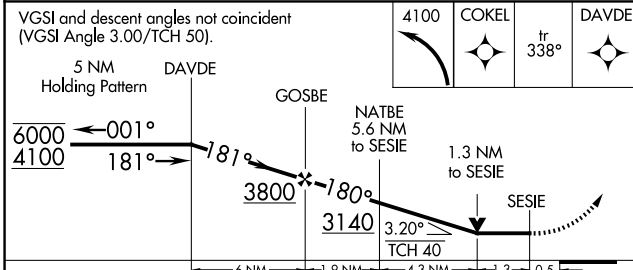
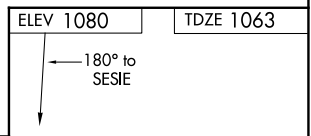
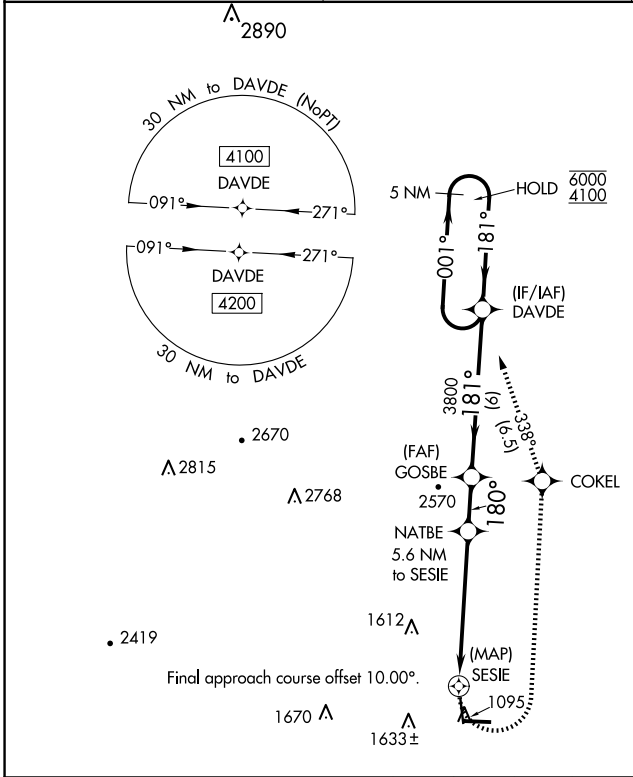
MENA INTERMOUNTAIN MUNI (MEZ)

APP CRS 180°	Rwy Idg 5001
	TDZE 1063
	Apt Elev 1080

RNP APCH.
 ▼ Circling Rwy 35 NA at night.
 ▲ Rwy 17 helicopter visibility reduction below ¾ SM NA.

MISSED APPROACH: Climbing left turn to 4100 direct COKEK and track 338° to DAVDE and hold.

AWOS-3 118.025	MEMPHIS CENTER 126.1 269.0	UNICOM 122.8 (CTAF) 0
--------------------------	--------------------------------------	---------------------------------



CATEGORY	A	B	C	D
LNVA MDA	1660-1	597 (600-1)	1660-1¼ 597 (600-1¼)	NA
CIRCLING	1840-1 760 (800-1)	2140-1½ 1060 (1100-1½)	2220-3 1140 (1200-3)	NA

ELEV 1080	TDZE 1063
-----------	-----------

180° to SESIE

MIRL Rwy 9-27 and 17-35
REIL Rwy 9, 27 and 35

SC-1, 20 FEB 2025 to 20 MAR 2025

SC-1, 20 FEB 2025 to 20 MAR 2025