

VOR/DME JVL 114.3 Chan 90	APP CRS 276°	Rwy Idg 5000 TDZE 1070 Apt Elev 1086
-----------------------------------------------	------------------------	-----------------------------------------------------------------

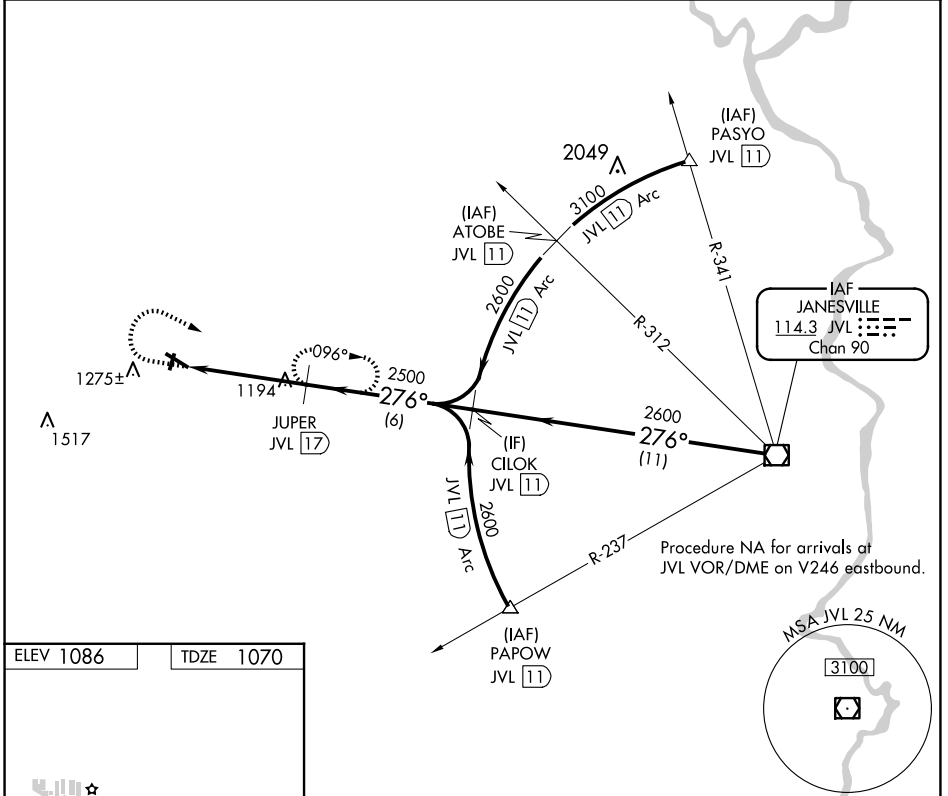
VOR/DME RWY 30

MONROE MUNI (EFT)

⚠ When local altimeter setting not received, use Altimeter setting and increase all MDA 100 feet, increase Circling Cat C visibility ¼ mile.
⚠ Rwy 30 helicopter visibility reduction below ¾ SM NA. Circling to Rwy 2-20 NA at night.

MISSED APPROACH: Climb to 1800 then climbing right turn to 2600 on JVL VOR/DME R-276 to JUPER/JVL 17 DME and hold.

AWOS-3 118.375	ROCKFORD APP CON 126.0 327.0	UNICOM 123.05 (CTAF) 0
--------------------------	----------------------------------------	----------------------------------



ELEV 1086	TDZE 1070
-----------	-----------

MIRL Rws 12-30 and 2-20 **0**
 REIL Rws 2, 12, 20 and 30 **0**

1800	2600	JUPER JVL 17	JVL VOR/DME	
↑	↷ JVL R-276			
JVL 21.3		JUPER JVL 17	JVL 2700	
↷		CILOK JVL 11	↷	
2500		2600	2700	
↷		↷	↷	
4.3 NM		6 NM	11 NM	
CATEGORY	A	B	C	D
S-30	1460-1 390 (400-1)	1460-1¼ 390 (400-1½)	1460-1½ 390 (400-1½)	1460-1¾ 390 (400-1¾)
CIRCLING	1540-1 454 (500-1)	1640-1 554 (600-1)	1640-1½ 554 (600-1½)	1640-2 554 (600-2)

Procedure Turn NA

EC-3, 20 FEB 2025 to 20 MAR 2025

EC-3, 20 FEB 2025 to 20 MAR 2025