

|             |          |             |
|-------------|----------|-------------|
| APP CRS     | Rwy Idg  | <b>5020</b> |
| <b>175°</b> | TDZE     | <b>806</b>  |
|             | Apt Elev | <b>806</b>  |

# RNAV (GPS) RWY 17

MIAMI RGNL (MIO)

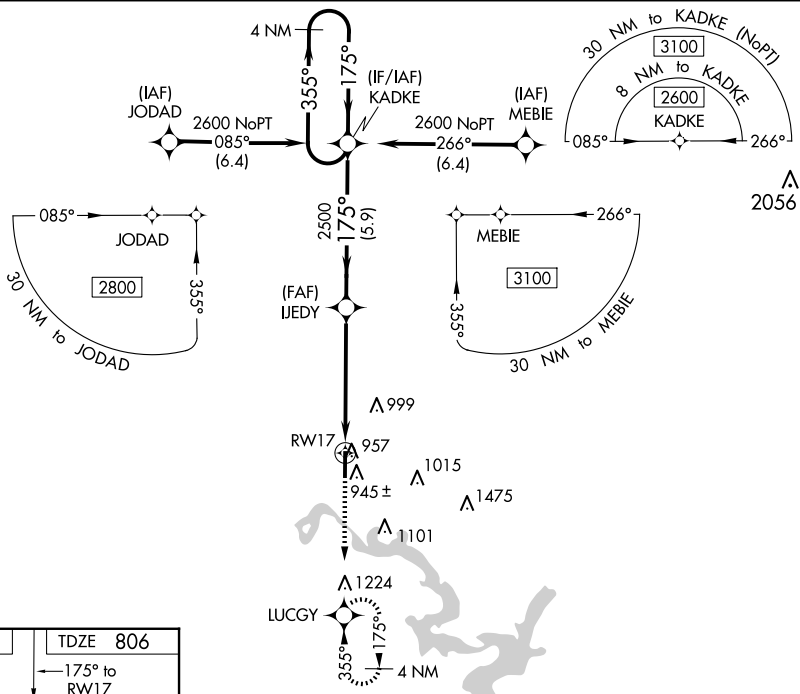
RNP APCH.

⚠ Baro-VNAV and VDP NA when using Grove altimeter setting.  
⚠ Rwy 17 helicopter visibility reduction below  $\frac{3}{4}$  SM NA. When local altimeter setting not received, use Grove altimeter setting.

ODALS

MISSED APPROACH: Climb to 2500 direct LUCGY and hold.

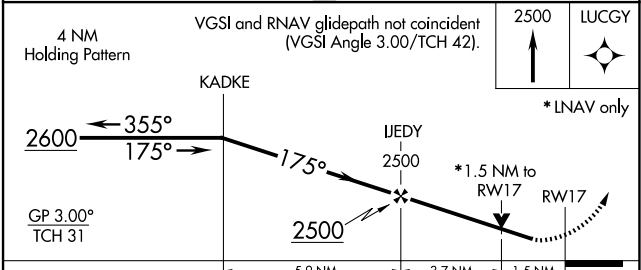
|                            |  |                                 |
|----------------------------|--|---------------------------------|
| AWOS-3PT<br><b>119.675</b> | KANSAS CITY CENTER<br><b>128.6 282.325</b> | UNICOM<br><b>122.8 (CTAF) ①</b> |
|----------------------------|--|---------------------------------|



ELEV 806 TDZE 806

175° to RWY 17

REIL Rwy 35 ①  
MIRL Rwy 17-35 ①



|              |   |             |  |    |
|--------------|---|-------------|--|----|
|              | A   | B           | C  | D  |
| CATEGORY     |   |             |  |    |
| LNAV/VNAV DA | 1206-1 $\frac{1}{8}$ 400 (400-1 $\frac{1}{8}$ ) |             |  | NA |
| LNAV MDA     | 1320-1  | 514 (600-1) | 1320-1 $\frac{3}{8}$<br>514 (600-1 $\frac{3}{8}$ ) | NA |
| CIRCLING     | 1320-1  | 514 (600-1) | 1460-1 $\frac{3}{4}$<br>654 (700-1 $\frac{3}{4}$ ) | NA |

SC-1, 20 FEB 2025 to 20 MAR 2025

SC-1, 20 FEB 2025 to 20 MAR 2025