

|             |          |             |
|-------------|----------|-------------|
| APP CRS     | Rwy Idg  | <b>3000</b> |
| <b>058°</b> | TDZE     | <b>157</b>  |
|             | Apt Elev | <b>157</b>  |

# RNAV (GPS) RWY 6

BIDDEFORD MUNI (B19)

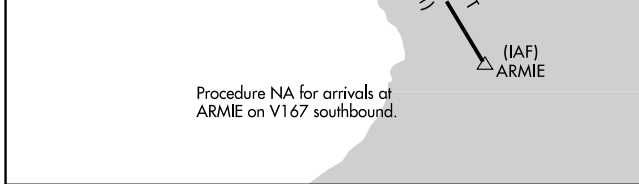
|   |  |
|---|--|
| RNP APCH.   | MISSED APPROACH: Climbing left turn to 3000 direct ENE VOR/DME and hold, continue climb-in-hold to 3000. |
| Rwy 6 helicopter visibility reduction below 3/4 SM NA. Obtain local altimeter setting on CTAF; when not received use Sanford altimeter setting and increase all MDA 40 feet and LNAV visibility Cat C 1/8 SM, and Circling visibility Cat C 1/4 SM. VDP NA when using Sanford altimeter setting. Circling Rwy 24 NA at night. |  |

|  |                                 |
|--|---------------------------------|
| PORTLAND APP CON ★<br><b>119.75 269.35</b> | UNICOM<br><b>123.0 (CTAF) 1</b> |
|--|---------------------------------|

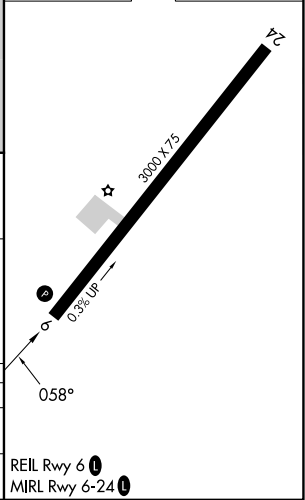


NE-1, 20 FEB 2025 to 20 MAR 2025

NE-1, 20 FEB 2025 to 20 MAR 2025



|          |          |
|----------|----------|
| ELEV 157 | TDZE 157 |
|----------|----------|



|                      |        |  |                 |        |
|----------------------|--------|--|-----------------|--------|
| 4 NM Holding Pattern | DEXXY  | VGSi and descent angles not coincident (VGSi Angle 3.50/TCH 31). | 3000            | ENE    |
| 6000                 | ← 238° | SWLCH  | 1.4 NM to RWY 6 |        |
| 2300                 | → 058° | 1300   | 3.03° TCH 31    |        |
|                      |        | 6.1 NM   | 2.1 NM          | 1.4 NM |

| CATEGORY | A     | B           | C                      | D  |
|----------|-------|-------------|------------------------|----|
| LNAV MDA | 680-1 | 523 (600-1) | 680-1½<br>523 (600-1½) | NA |
| CIRCLING | 780-1 | 623 (700-1) | 800-1¾<br>643 (700-1¾) | NA |