

WAAS CH 50232 W13A	APP CRS 125°	Rwy Idg TDZE Apt Elev	5152 358 358
----------------------------------------	------------------------	-----------------------------	-----------------------------------------

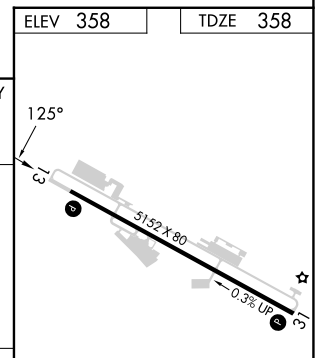
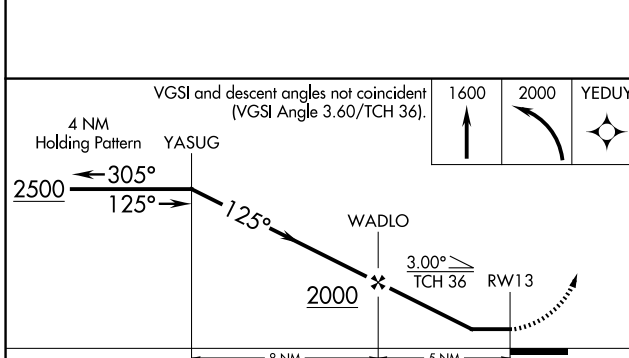
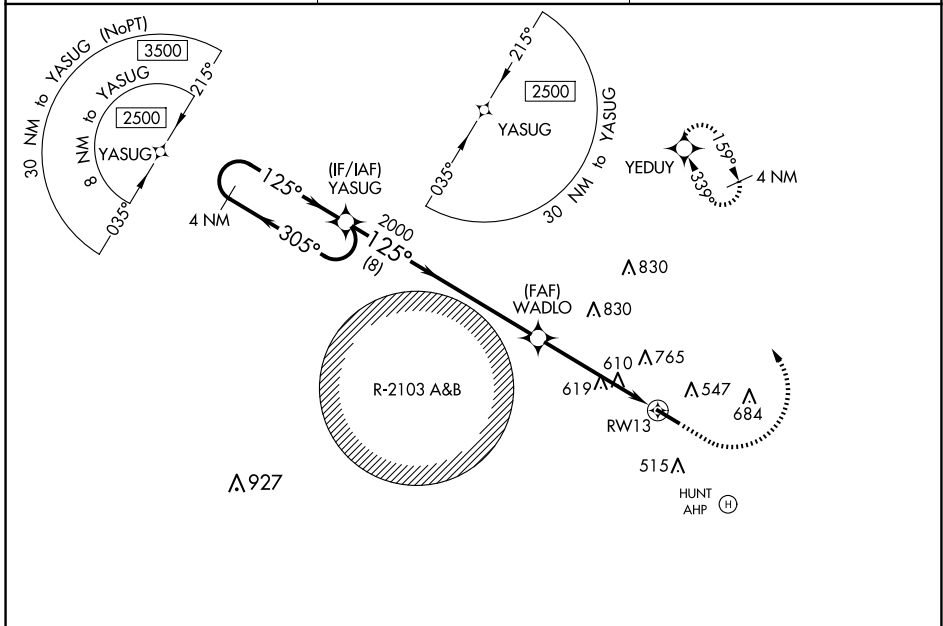
RNAV (GPS) RWY 13

OZARK/BLACKWELL FLD (71J)

RNP APCH. Use Dothan altimeter setting; when not received, use Cairns AAF (Fort Novosel) altimeter setting. Procedure NA at night. Rwy 13 helicopter visibility reduction below 1 SM NA.

MISSED APPROACH: Climb to 1600 then climbing left turn to 2000 direct YEDUY and hold.

DHN ASOS 135.725	CAIRNS APP CON ★ 125.4 327.125	UNICOM 122.7 (CTAF) 0
----------------------------	------------------------------------------	---------------------------------



CATEGORY	A		B		C		D	
	900-1	542 (600-1)	602 (700-1)	742 (800-1¾)	900-1 5/8	542 (600-1 5/8)	960-1 3/4	602 (700-1 3/4)
LP MDA	900-1	542 (600-1)	602 (700-1)	742 (800-1¾)	900-1 5/8	542 (600-1 5/8)	960-1 3/4	602 (700-1 3/4)
LNVA MDA	960-1	602 (700-1)	742 (800-1¾)	882 (950-2)	960-1 3/4	602 (700-1 3/4)	1020-2	742 (800-2 1/4)
CIRCLING	960-1	1100-1 3/4	1100-2 1/4	1240-3	960-1 3/4	1100-2 1/4	1240-3	1380-4

ELEV 358 TDZE 358

REIL Rws 13 and 31 0
MIRL Rwy 13-31 0

SE-4, 20 FEB 2025 to 20 MAR 2025

SE-4, 20 FEB 2025 to 20 MAR 2025