

WAAS CH <b>62832</b> <b>W31A</b>	APP CRS <b>305°</b>	Rwy Idg <b>5152</b> TDZE <b>350</b> Apt Elev <b>358</b>
--	------------------------	---

# RNAV (GPS) RWY 31

OZARK/BLACKWELL FLD (71J)

RNP APCH.

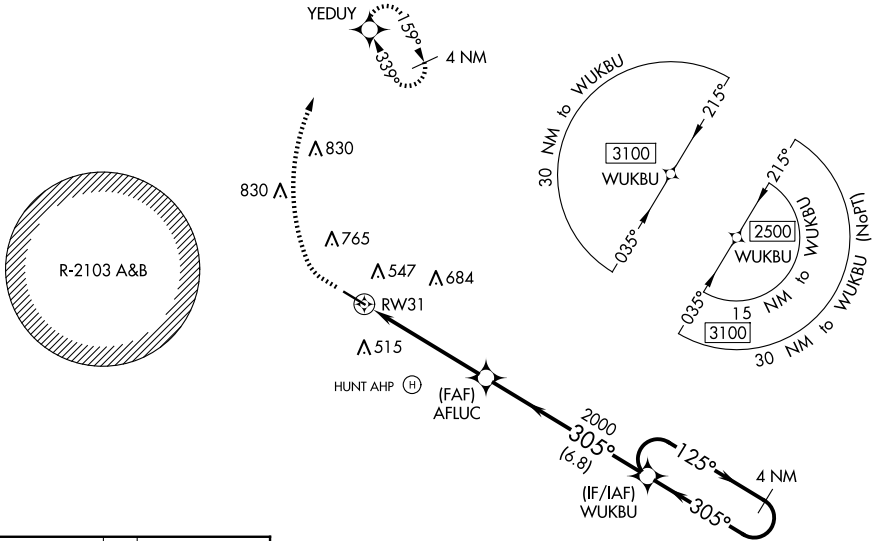
**▽** Baro-VNAV NA. Use Dothan altimeter setting; when not received, use Cairns AAF (Fort Novossel) altimeter setting.  
**△ NA** Rwy 31 helicopter visibility reduction below ¾ SM NA. Circling Rwy 13, 31 NA at night.

**MISSED APPROACH:** Climb to 900 then climbing right turn to 2000 direct YEDUY and hold.

DHN ASOS  
**135.725**

CAIRNS APP CON ★  
**125.4 327.125**

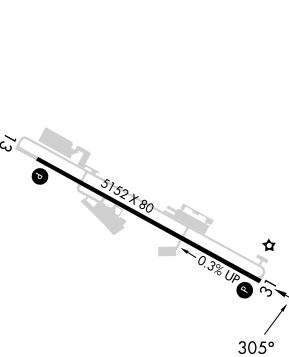
UNICOM  
**122.7 (CTAF) 0**



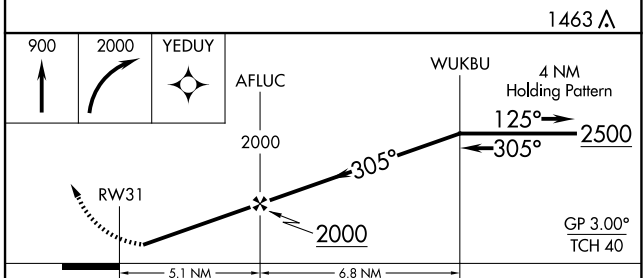
SE-4, 20 FEB 2025 to 20 MAR 2025

SE-4, 20 FEB 2025 to 20 MAR 2025

ELEV	358	TDZE	350
------	-----	------	-----



REIL Rwy 13 and 31 **0**  
MIRL Rwy 13-31 **0**



CATEGORY	A	B	C	D
LPV DA	661-1 310 (400-1)			NA
LNAV/VNAV DA	851-1¾ 501 (500-1¾)			NA
LNAV MDA	860-1	510 (600-1)	860-1⅜ 510 (600-1⅜)	NA
CIRCLING	900-1 542 (600-1)	1100-1¾ 742 (800-1¾)	1100-2¼ 742 (800-2¼)	NA