

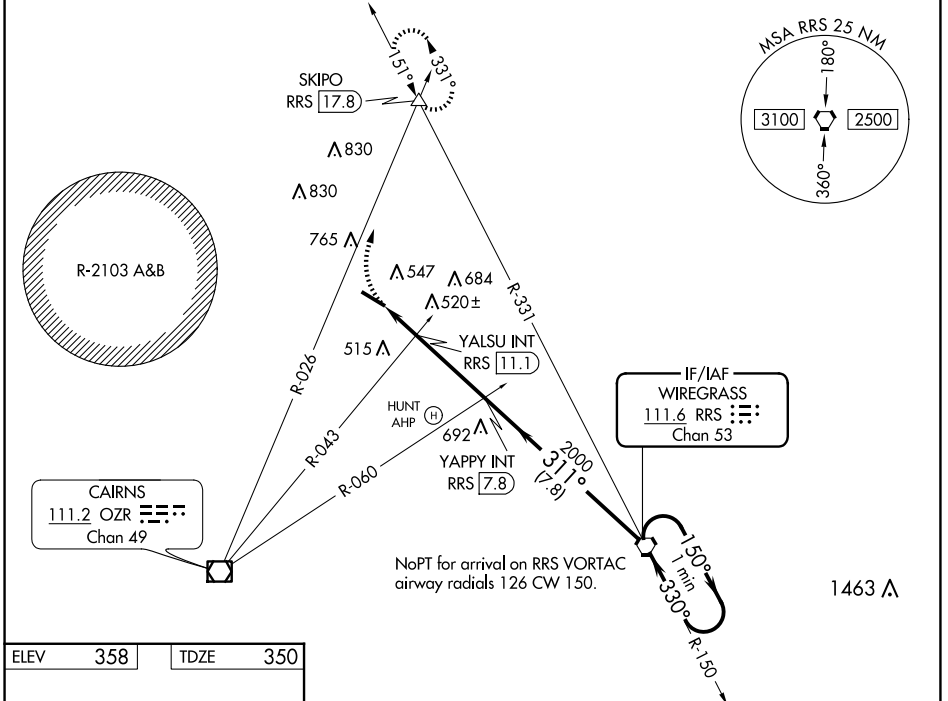
VORTAC RRS 111.6 Chan 53	APP CRS 311°	Rwy Idg 5152 TDZE 350 Apt Elev 358
--	------------------------	---

VOR RWY 31
OZARK/BLACKWELL FLD (71J)

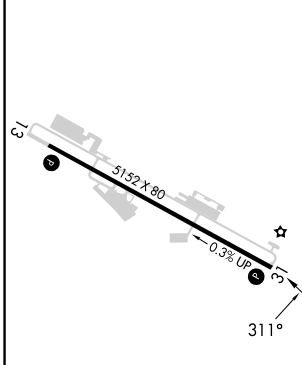
NA Use Dothan altimeter setting; when not received, use Cairns AAF (Fort Novosel) altimeter setting. Procedure NA at night. Rwy 31 helicopter visibility reduction below 1 SM NA.

MISSED APPROACH: Climbing right turn to 2000 on OZR VOR/DME R-026 to SKIPO INT/RRS 17.8 DME and hold.

DHN ASOS 135.725	CAIRNS APP CON * 125.4 327.125	UNICOM 122.7 (CTAF)
----------------------------	--	-------------------------------

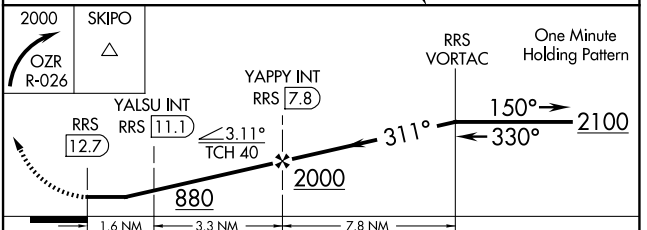


ELEV	358	TDZE	350
------	-----	------	-----



REIL Rws 13 and 31 **1**
MIRL Rwy 13-31 **1**

FAF to MAP 4.9 NM					
Knots	60	90	120	150	180
Min:Sec	4:54	3:16	2:27	1:58	1:38



CATEGORY	A	B	C	D
S-31	880-1	530 (600-1)	880-1½ 530 (600-1½)	NA
CIRCLING	900-1 542 (600-1)	1100-1¾ 742 (800-1¾)	1100-2¼ 742 (800-2¼)	NA
YALSU FIX MINIMUMS (DUAL VOR RECEIVERS OR DME REQUIRED)				
S-31	820-1	470 (500-1)	820-1¾ 470 (500-1¾)	NA
CIRCLING	900-1 542 (600-1)	1100-1¾ 742 (800-1¾)	1100-2¼ 742 (800-2¼)	NA

SE-4, 20 FEB 2025 to 20 MAR 2025

SE-4, 20 FEB 2025 to 20 MAR 2025