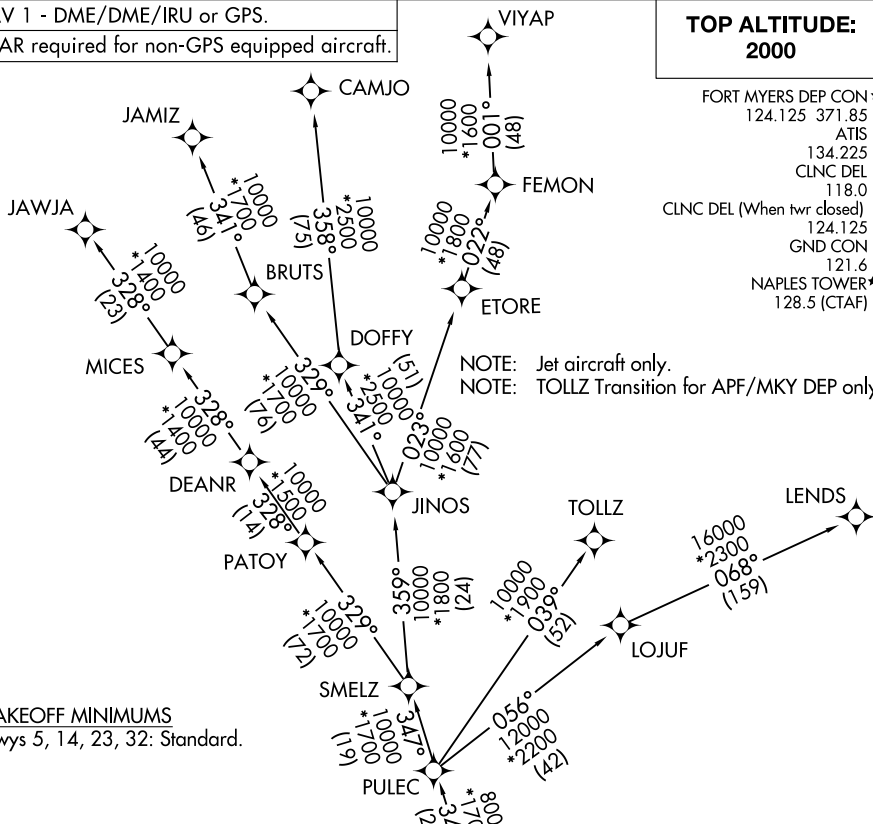


CSHEL SEVEN DEPARTURE (RNAV)

RNAV 1 - DME/DME/IRU or GPS.
RADAR required for non-GPS equipped aircraft.

**TOP ALTITUDE:
2000**

FORT MYERS DEP CON*
 124.125 371.85
 ATIS
 134.225
 CLNC DEL
 118.0
 CLNC DEL (When twr closed)
 124.125
 GND CON
 121.6
 NAPLES TOWER*
 128.5 (CTAF)



TAKEOFF MINIMUMS
Rwys 5, 14, 23, 32: Standard.

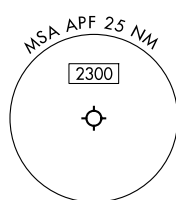
DEPARTURE ROUTE DESCRIPTION

TAKEOFF RUNWAYS 5, 23, 32: Climb on assigned heading for RADAR vectors to CSHEL, thence...

TAKEOFF RUNWAY 14: Climb on heading 137° to 600, for RADAR vectors to CSHEL, thence...

... on assigned transition. Maintain 2000. Expect clearance to filed altitude within 10 minutes after departure.

- CAMJO TRANSITION (CSHEL7.CAMJO)
- JAMIZ TRANSITION (CSHEL7.JAMIZ)
- JAWJA TRANSITION (CSHEL7.JAWJA)
- LENDZ TRANSITION (CSHEL7.LENDZ)
- TOLLZ TRANSITION (CSHEL7.TOLLZ)
- VIYAP TRANSITION (CSHEL7.VIYAP)



NOTE: Chart not to scale.

CSHEL SEVEN DEPARTURE (RNAV)

(CSHEL7.CSHEL) 31OCT24