

NAPLES SIX DEPARTURE

RADAR required.

**TOP ALTITUDE:
2000**

FORT MYERS DEP CON*
124.125 371.85
CLNC DEL
118.0
CLNC DEL (When twr closed)
124.125
NAPLES TOWER*
128.5 (CTAF)

ST PETERSBURG
116.4 PIE :--:--:
Chan 111

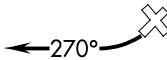
ORLANDO
112.2 ORL :--:--:
Chan 59

LAKELAND
116.0 LAL :--:--:
Chan 107

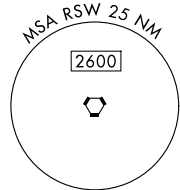
SARASOTA
117.0 SRQ :--:--:
Chan 117

LEE COUNTY
114.15 RSW :--:--:
Chan 88(Y)

FT. LAUDERDALE
114.4 FLL :--:--:
Chan 91



KEY WEST
113.5 EYW :--:--:
Chan 82



TAKEOFF MINIMUMS
Rwys 5, 14, 32: NA-ATC.
Rwy 23: 300-1.

NOISE ABATEMENT NOTE:

Jet aircraft departure procedures and headings are predicated on avoiding noise sensitive areas. Flight crew awareness and compliance is important in minimizing noise impacts on surrounding communities.

NOTE: Chart not to scale.



DEPARTURE ROUTE DESCRIPTION

TAKEOFF RUNWAY 23: Turn right heading 270°. Climb and maintain 2000. Expect RADAR vectors to join assigned route. Expect clearance to filed altitude 10 minutes after departure.