

APP CRS 058°	Rwy Idg TDZE Apt Elev	N/A N/A 5904
------------------------	-----------------------------	---

RNAV (GPS)-A

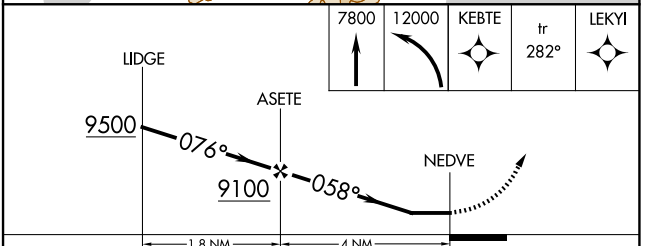
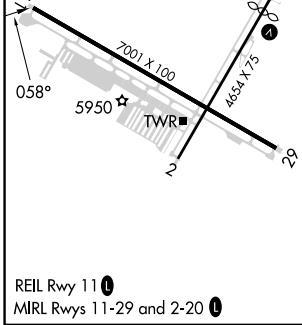
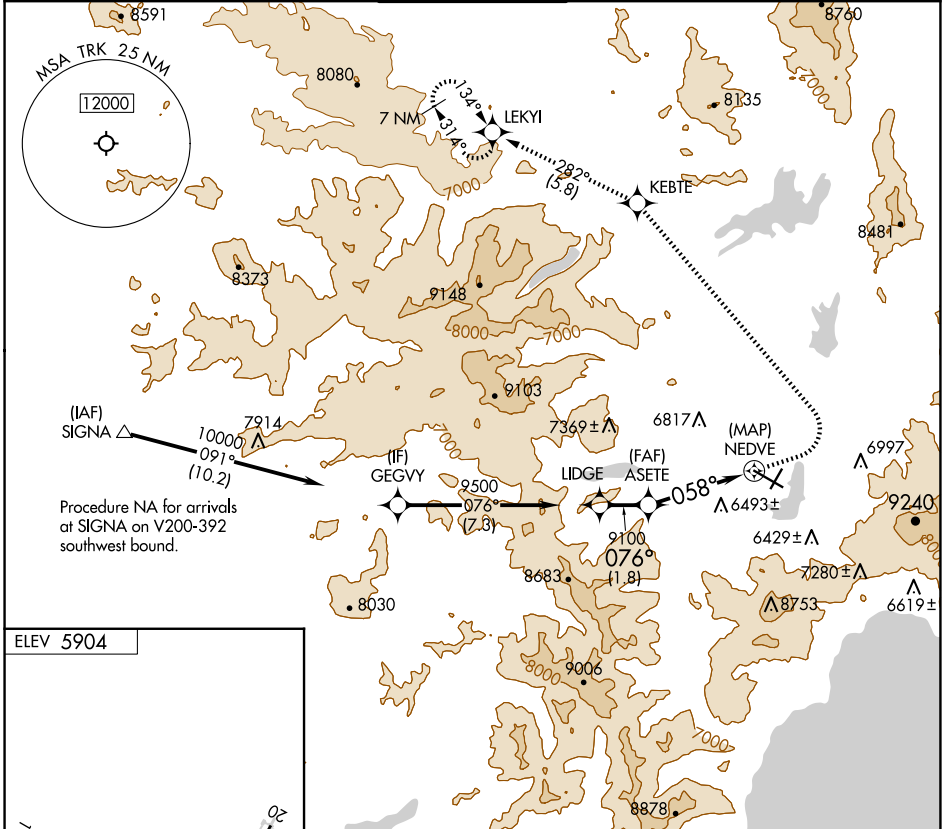
TRUCKEE-TAHOE (TRK)

RNP APCH.

⚠ Circling NA for Cat C south of Rwy 29 and east of Rwy 2.
⚠ Procedure NA at night. When local altimeter setting not received, procedure NA.
❄ -18°C

MISSED APPROACH: (Do not exceed 200K until KEBTE)
 Climb to 7800 then climbing left turn to 12000 direct KEBTE and track 282° to LEKY1 and hold, continue climb-in-hold 12000.

D-ATIS 118.0	OAKLAND CENTER 127.95 316.1	TRUCKEE TOWER* 120.575 (CTAF) 0	GND CON 118.3	UNICOM 122.95
------------------------	---------------------------------------	---	-------------------------	-------------------------



CATEGORY	A	B	C	D
C CIRCLING	7500-1¼ 1596 (1600-1¼)	7500-1½ 1596 (1600-1½)	7700-3 1796 (1800-3)	NA

SW-2, 20 FEB 2025 to 20 MAR 2025

SW-2, 20 FEB 2025 to 20 MAR 2025