

APP CRS	Rwy Idg	4000
094°	TDZE	784
	Apt Elev	787

RNAV (GPS) RWY 9

VAN WERT COUNTY (VNW)

RNP APCH - GPS.

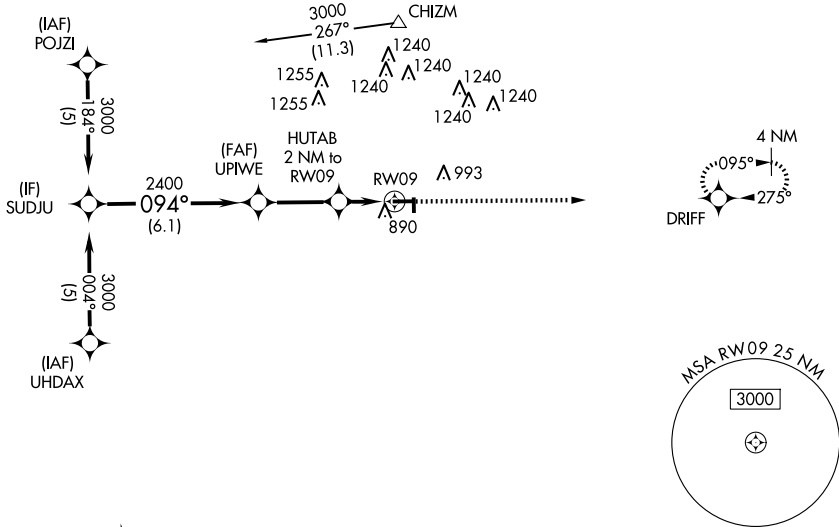
▼ Circling NA to Rwys 18 and 36. Circling Rwy 27 NA at night. Rwy 9 helicopter visibility reduction below 3/4 SM NA.

▲

MISSED APPROACH: Climb to 3000 direct DRIFT and hold.

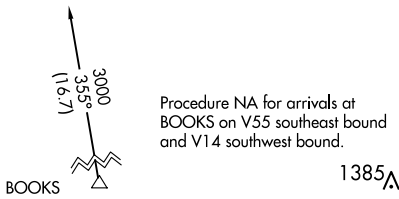
AWOS-3 125.175	FORT WAYNE APP CON 127.2 284.6	UNICOM 123.0 (CTAF) 0
--------------------------	--	---------------------------------

Procedure NA for arrivals at CHIZM on V38 eastbound.



EC-2, 20 FEB 2025 to 20 MAR 2025

EC-2, 20 FEB 2025 to 20 MAR 2025



ELEV	787	TDZE	784
------	-----	------	-----

Detailed diagram of RWY 09 showing the runway (4000 X 75), taxiway (TCH 40), and surrounding terrain. Key altitudes include 3000 ft, 1460 ft, 81 ft, 75 ft, and 36 ft. The heading is 094°.

CATEGORY	A	B	C	D
LNAV MDA	1160-1 376 (400-1)		1160-1 1/4 376 (400-1 1/4)	
CIRCLING	1340-1 553 (600-1)		1340-1 1/2 553 (600-1 1/2)	1600-2 3/4 813 (900-2 3/4)

MIRL Rwy 9-27 0
REIL Rwys 9 and 27 0