

WAAS CH <b>45818</b> <b>W18A</b>	APP CRS <b>180°</b>	Rwy ldg TDZE Apt Elev	<b>5001</b> <b>44</b> <b>46</b>
--	------------------------	-----------------------------	---------------------------------------

# RNAV (GPS) RWY 18

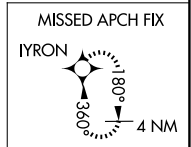
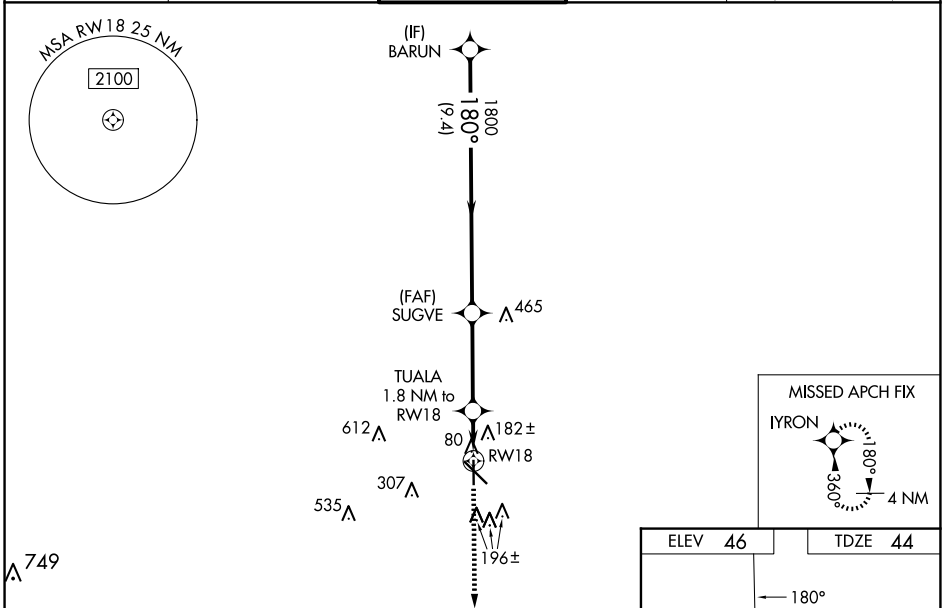
HAMMOND NORTHSORE RGNL (HDC)

RNP APCH - GPS.

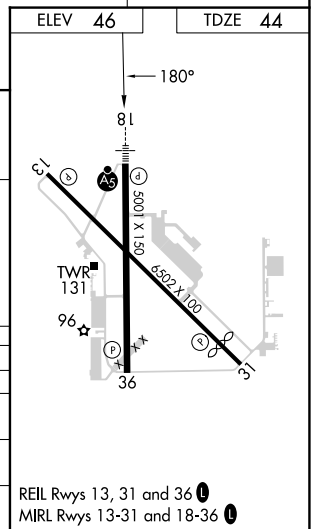
▼ Baro-VNAV and VDP NA when using Louis Armstrong New Orleans Intl altimeter setting.  
 ▲ When local altimeter setting not received, use Louis Armstrong New Orleans Intl altimeter setting and increase LPV DA to 339 feet; increase LNAV/VNAV DA to 555 feet and all visibilities ¼ SM. Increase all MDAs 100 feet and LNAV visibility Cat C/D ½ SM, and Circling visibility Cat C/D ½ SM. For inop ALS when using Louis Armstrong New Orleans Intl altimeter increase LPV all Cats visibility to ⅔ SM; LNAV/VNAV all Cats visibility to 1⅓ SM and LNAV Cats C/D visibility to 1⅓ SM. For inop ALS increase LNAV/VNAV all Cats visibility to 1¼ SM and LNAV Cat C/D visibility to 1⅓ SM.

MALSRL MISSED APPROACH: Climb to 2200 direct IYRON and hold.

ATIS <b>118.325</b>	NEW ORLEANS APP CON <b>119.3 350.35</b>	HAMMOND TOWER ★ <b>120.575</b> (CTAF) ①	GND CON <b>119.85</b>	CLNC DEL <b>119.3</b> (When twr closed)
------------------------	--	--	--------------------------	---



	BARUN		SUGVE		TUALA 1.8 NM to RW18		RW18	
	1800		1800		660		1.1 NM to RW18	
GP 3.00° TCH 52	9.4 NM		3.5 NM		0.7 NM		1.1 NM	
CATEGORY	A		B		C		D	
LPV DA	250-½		206 (300-½)					
LNAV/VNAV DA	466-¾		422 (500-¾)					
LNAV MDA	460-½ 416 (500-½)		460-¾ 416 (500-¾)					
CIRCLING	500-1 454 (500-1)		620-1½ 574 (600-1½)		920-2¾ 874 (900-2¾)			



SC-4, 20 FEB 2025 to 20 MAR 2025

SC-4, 20 FEB 2025 to 20 MAR 2025