

WAAS CH 77642 W09A	APP CRS 092°	Rwy Idg TDZE 1007 Apt Elev 1007	4802
--	------------------------	---	-------------

RNAV (GPS) RWY 9

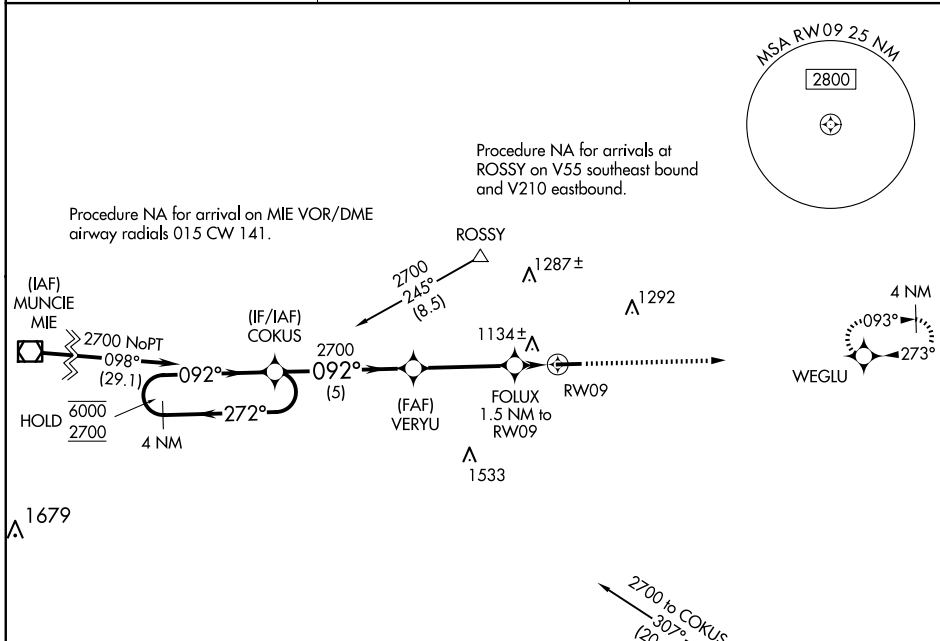
DARKE COUNTY (VES)

RNP APCH - GPS.

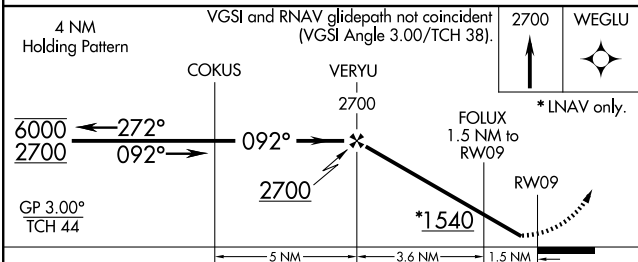
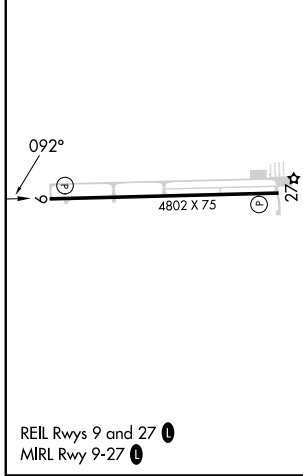
▼ Circling Rwy 27 NA at night. Rwy 9 helicopter visibility reduction below $\frac{3}{4}$ SM NA. For uncompensated Baro-VNAV systems, LNAV/VNAV NA below -16° C or above 54° C.

MISSED APPROACH: Climb to 2700 direct WEGLU and hold.

AWOS-3PT 125.9	COLUMBUS APP CON 134.45 352.05	UNICOM 122.8 (CTAF) 0
--------------------------	--	---------------------------------



ELEV 1007	TDZE 1007
-----------	-----------



CATEGORY	A	B	C	D
LPV DA	1257-1 250 (300-1)			NA
LNNAV/VNAV DA	1400-1 $\frac{1}{8}$ 393 (400-1 $\frac{1}{8}$)			NA
LNNAV MDA	1400-1	393 (400-1)	1400-1 $\frac{1}{8}$ 393 (400-1 $\frac{1}{8}$)	NA
C CIRCLING	1440-1 433 (500-1)	1480-1 473 (500-1)	1660-1 $\frac{3}{4}$ 653 (700-1 $\frac{3}{4}$)	NA

EC-2, 20 FEB 2025 to 20 MAR 2025

EC-2, 20 FEB 2025 to 20 MAR 2025