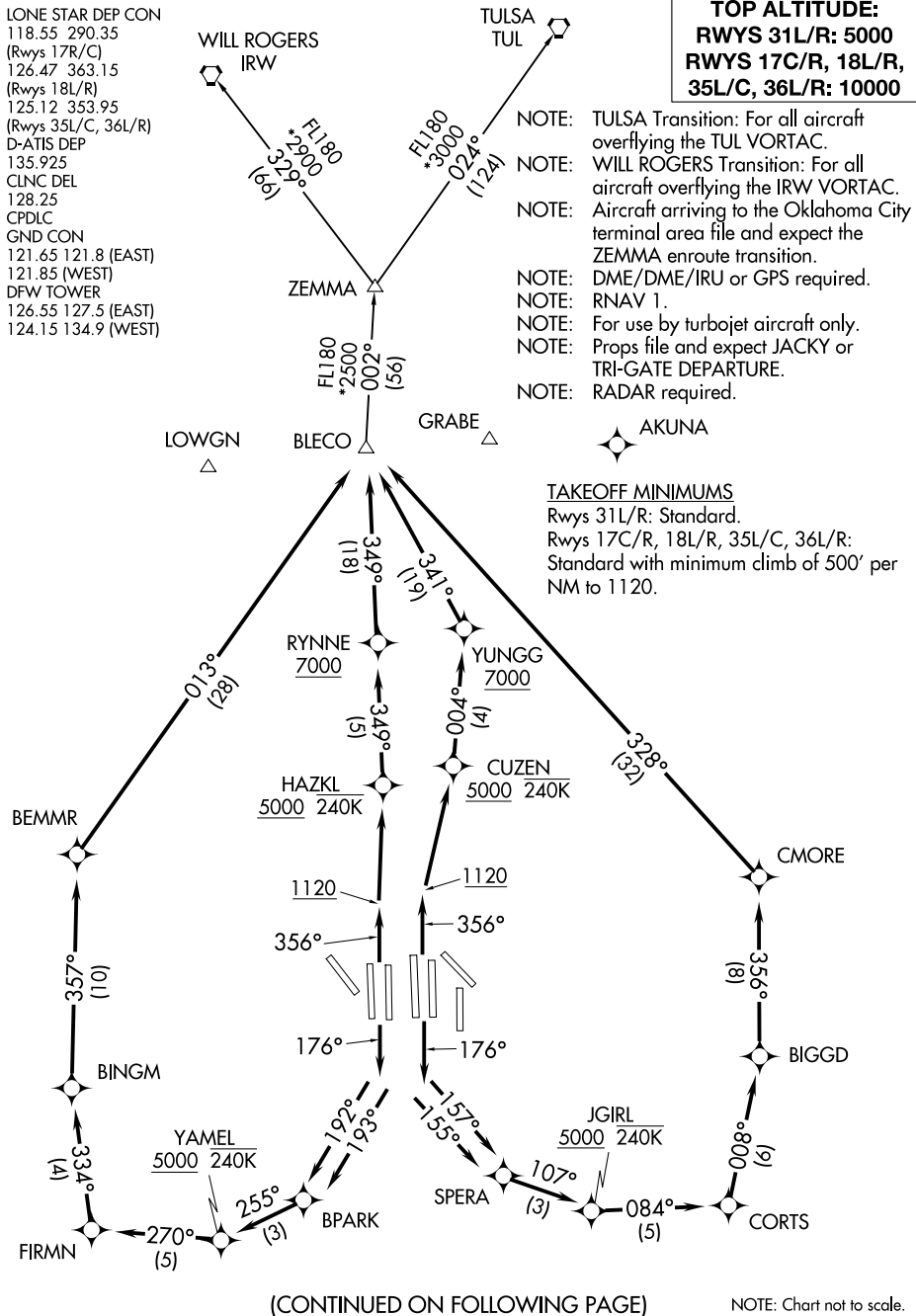


BLECO EIGHT DEPARTURE (RNAV)

LONE STAR DEP CON
118.55 290.35
(Rwys 17R/C)
126.47 363.15
(Rwys 18L/R)
125.12 353.95
(Rwys 35L/C, 36L/R)
D-ATIS DEP
135.925
CLNC DEL
128.25
CPDLC
GND CON
121.65 121.8 (EAST)
121.85 (WEST)
DFW TOWER
126.55 127.5 (EAST)
124.15 134.9 (WEST)

TOP ALTITUDE:
RWYS 31L/R: 5000
RWYS 17C/R, 18L/R,
35L/C, 36L/R: 1000

- NOTE: TULSA Transition: For all aircraft overflying the TUL VORTAC.
NOTE: WILL ROGERS Transition: For all aircraft overflying the IRW VORTAC.
NOTE: Aircraft arriving to the Oklahoma City terminal area file and expect the ZEMMA enroute transition.
NOTE: DME/DME/IRU or GPS required.
NOTE: RNAV 1.
NOTE: For use by turbojet aircraft only.
NOTE: Props file and expect JACKY or TRI-GATE DEPARTURE.
NOTE: RADAR required.



(CONTINUED ON FOLLOWING PAGE)

BLECO EIGHT DEPARTURE (RNAV)

SC-2, 20 FEB 2025 to 20 MAR 2025

SC-2, 20 FEB 2025 to 20 MAR 2025



DEPARTURE ROUTE DESCRIPTION

TAKEOFF RWY 17C: Climb heading 176° to intercept course 157° to SPERA, then on track 107° to cross JGIRL at or above 5000, then on depicted route to BLECO, thence. . . .

TAKEOFF RWY 17R: Climb heading 176° to intercept course 155° to SPERA, then on track 107° to cross JGIRL at or above 5000, then on depicted route to BLECO, thence. . . .

TAKEOFF RWY 18L: Climb heading 176° to intercept course 193° to BPARK, then on track 255° to cross YAMEL at or above 5000, then on depicted route to BLECO, thence. . . .

TAKEOFF RWY 18R: Climb heading 176° to intercept course 192° to BPARK, then on track 255° to cross YAMEL at or above 5000, then on depicted route to BLECO, thence. . . .

TAKEOFF RWYS 35L/C: Climb heading 356° to 1120, then direct CUZEN, cross CUZEN at or above 5000, then on track 004° to cross YUNGG at or above 7000, then on depicted route to BLECO, thence. . . .

TAKEOFF RWYS 36L/R: Climb heading 356° to 1120, then direct HAZKL, cross HAZKL at or above 5000, then on track 349° to cross RYNNE at or above 7000, then on depicted route to BLECO, thence. . . .

. . . .on (transition) maintain 10000. Expect filed altitude ten minutes after departure.

TAKEOFF RWYS 31L/R: Climb heading assigned by ATC, expect RADAR vectors to BLECO, thence. . . .

. . . .on (transition) maintain 5000. Expect filed altitude ten minutes after departure.

- TULSA TRANSITION (BLECO8.TUL)
- WILL ROGERS TRANSITION (BLECO8.IRW)
- ZEMMA TRANSITION (BLECO8.ZEMMA)

SC-2, 20 FEB 2025 to 20 MAR 2025

SC-2, 20 FEB 2025 to 20 MAR 2025