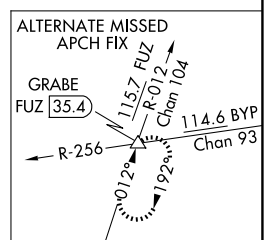
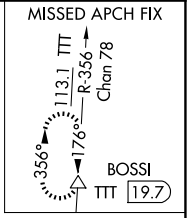
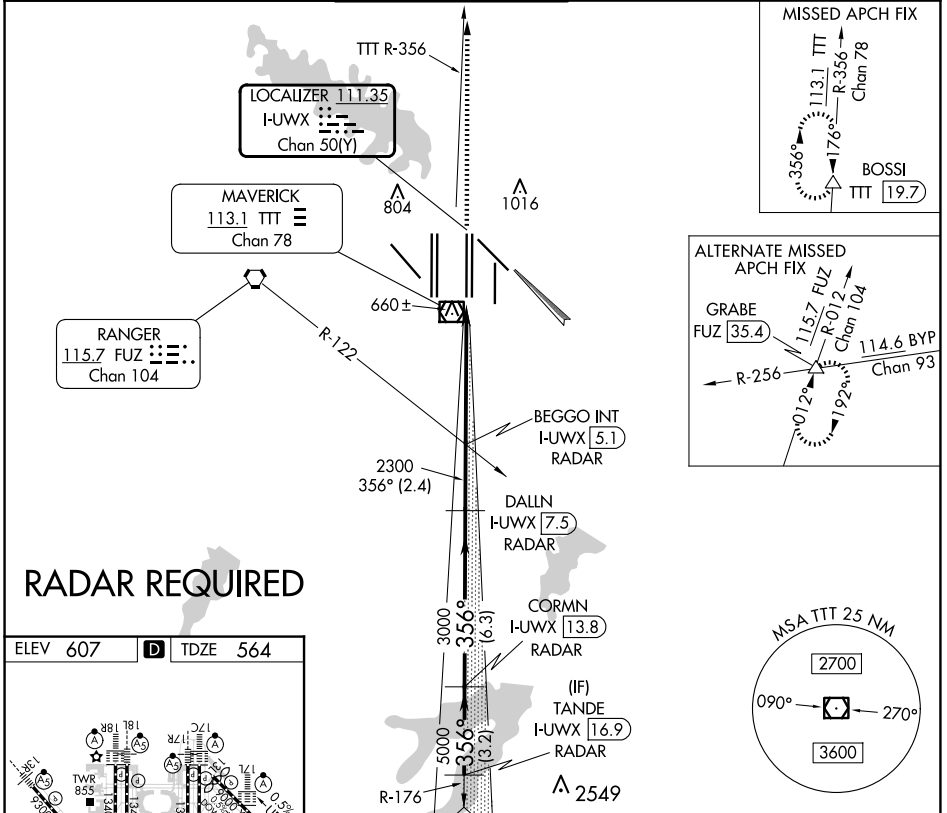


LOC/DME I-UWX <b>111.35</b> Chan <b>50(Y)</b>	APP CRS <b>356°</b>	Rwy Idg <b>13400</b> TDZE <b>564</b> Apt Elev <b>607</b>
---	------------------------	--

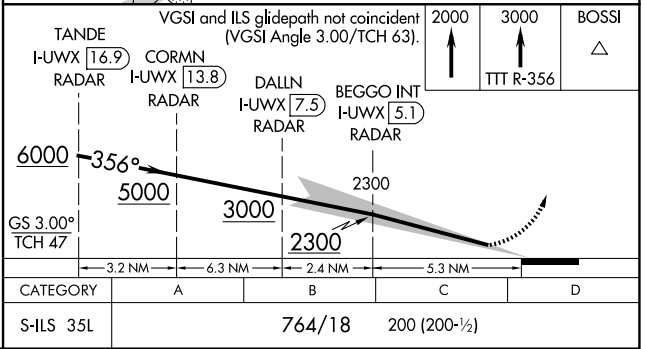
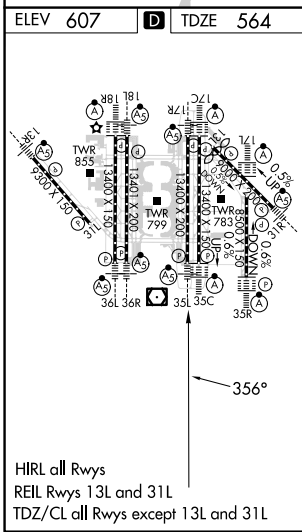
# CONVERGING ILS RWY 35L

DALLAS-FORT WORTH INTL (DFW)

<p><b>▼</b> DME or RADAR required. Simultaneous approach authorized with Converging ILS Rwy 31R.</p>		<p>MALS/R</p>	<p>MISSED APPROACH: Climb to 2000 then climb to 3000 on TTT VOR/DME R-356 to BOSSI/TTT 19.7 DME/RADAR and hold.</p>			
D-ATIS ARR <b>123.775</b> DEP <b>135.925</b>	LONE STAR APP CON <b>127.075</b>	DFW TOWER <b>126.55 127.5</b> <b>124.15 134.9</b>	EAST WEST WEST	GND CON <b>121.65 121.8</b> <b>121.85</b> WEST	CLNC DEL <b>128.25</b>	CPDLC



## RADAR REQUIRED



SC-2, 20 FEB 2025 to 20 MAR 2025

SC-2, 20 FEB 2025 to 20 MAR 2025