

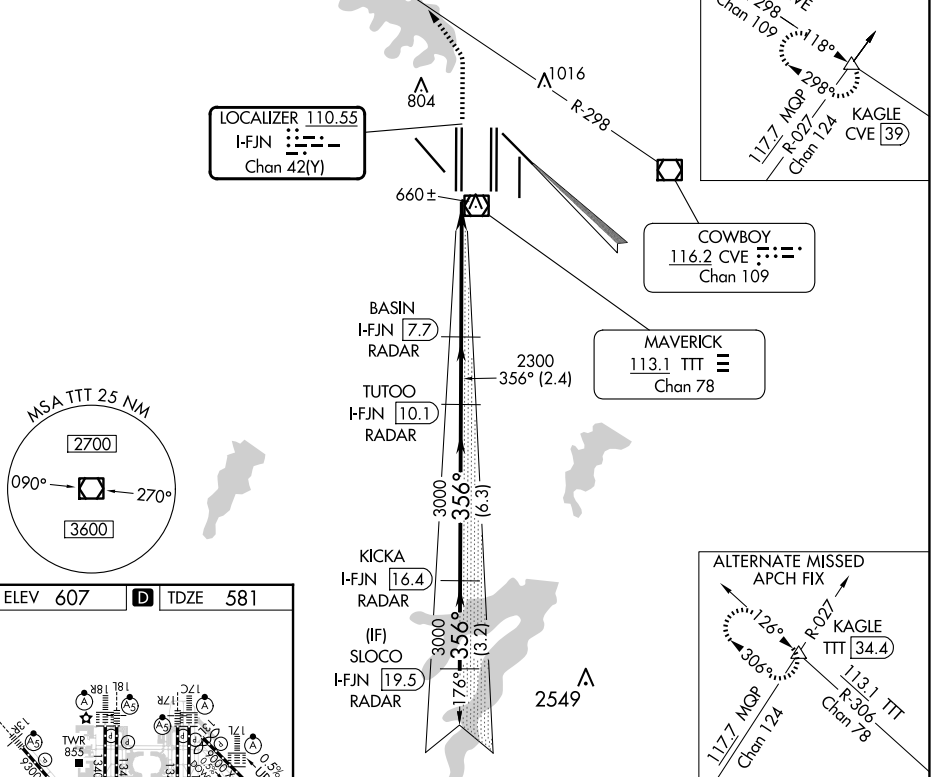
LOC/DME I-FJN <b>110.55</b> Chan <b>42 (Y)</b>	APP CRS <b>356°</b>	Rwy Idg TDZE <b>13401</b> <b>581</b> Apt Elev <b>607</b>
--	------------------------	--

# CONVERGING ILS RWY 36R

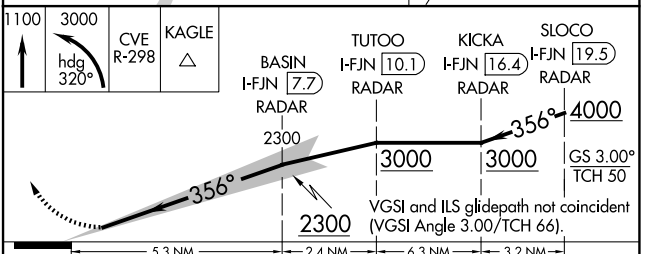
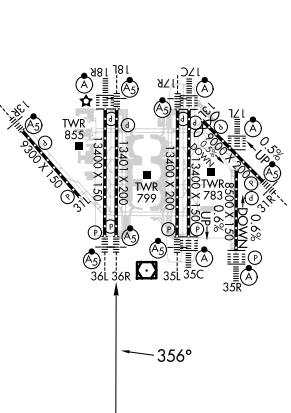
DALLAS-FORT WORTH INTL (DFW)

<b>Simultaneous approach authorized with Converging ILS Rwy 31R. DME or Radar required.</b>		<b>MALSR</b> 	<b>MISSED APPROACH:</b> Climb to 1100, then climbing left turn to 3000 on heading 320° and CVE VOR/DME R-298 to KAGLE INT/CVE 39 DME and hold.		
D-ATIS ARR <b>123.775</b> DEP <b>135.925</b>	LONE STAR APP CON <b>118.425</b>	DFW TOWER <b>126.55 127.5</b> EAST <b>124.15 134.9</b> WEST	GND CON <b>121.65 121.8</b> EAST <b>121.85</b> WEST	CLNC DEL <b>128.25</b>	CPDLC

## RADAR REQUIRED



ELEV <b>607</b>	<b>D</b>	TDZE <b>581</b>
-----------------	----------	-----------------



CATEGORY	A	B	C	D
S-ILS 36R	781/18		200 (200-1/2)	

SC-2, 20 FEB 2025 to 20 MAR 2025

SC-2, 20 FEB 2025 to 20 MAR 2025