

LOC/DME I-VYV 111.9 Chan 56	APP CRS 176°	Rwy Idg 13400 TDZE 607 Apt Elev 607
--	------------------------	--

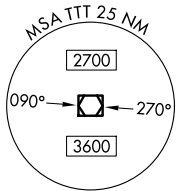
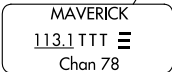
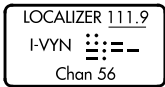
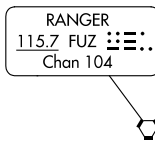
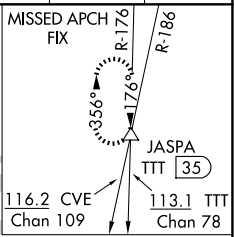
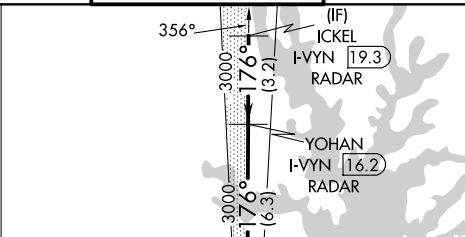
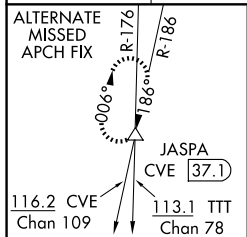
ILS RWY 18R (CONVERGING)

DALLAS-FORT WORTH INTL (DFW)

DME and RADAR required.

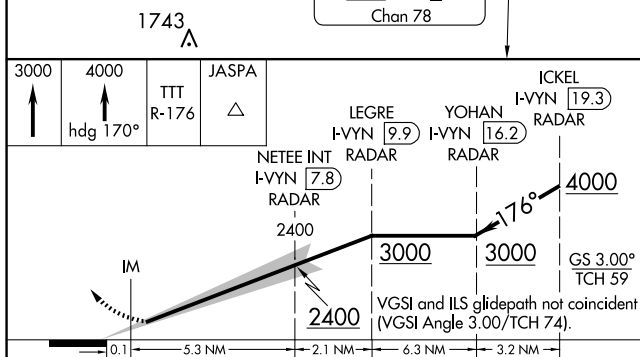
Simultaneous approach authorized with CONVERGING ILS RWY 13R, CONVERGING ILS RWY 17C, and CONVERGING ILS 17R.

D-ATIS ARR 123.775 DEP 135.925	LONE STAR APP CON 118.425	DFW TOWER 126.55 127.5 EAST 124.15 134.9 WEST	GND CON 121.65 121.8 EAST 121.85 WEST	CLNC DEL 128.25	CPDLC
--	-------------------------------------	---	---	---------------------------	-------

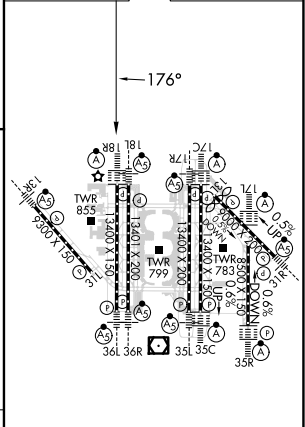


SC-2, 20 FEB 2025 to 20 MAR 2025

SC-2, 20 FEB 2025 to 20 MAR 2025



ELEV 607	D	TDZE 607
----------	---	----------



CATEGORY	A	B	C	D
S-ILS 18R	807/18 200 (200-1/2)			

HIRL all Rwys
REL Rwy 13L and 31L
TDZ/CL all Rwys except 13L and 31L

ILS RWY 18R (CONVERGING)