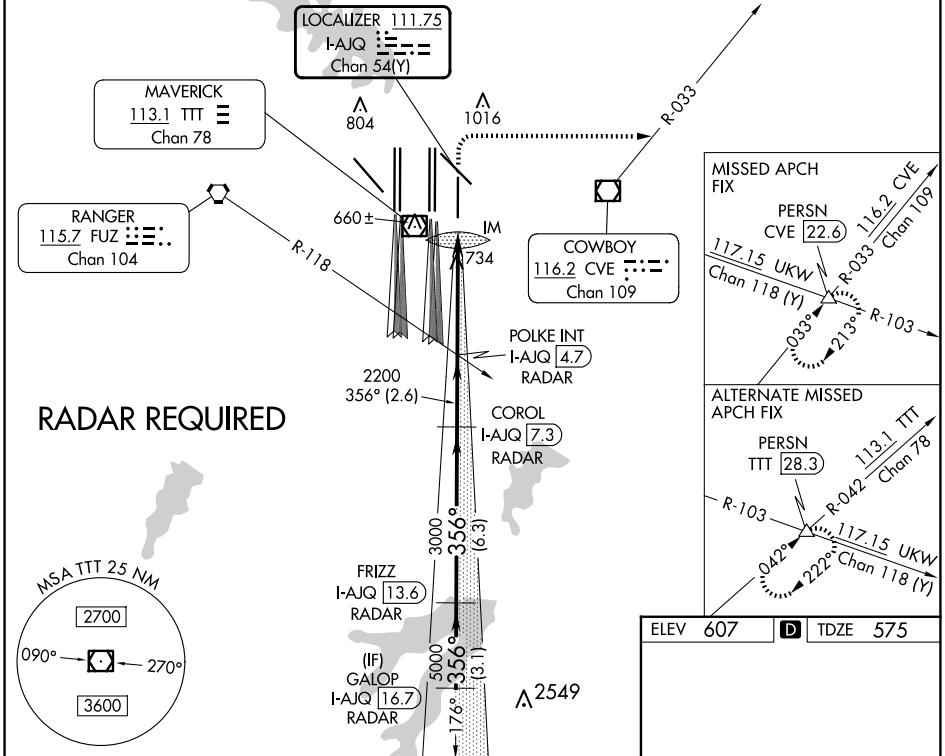


LOC/DME I-AJQ 111.75 Chan 54 (Y)	APP CRS 356°	Rwy Idg TDZE Apt Elev 8500 575 607
---	------------------------	--

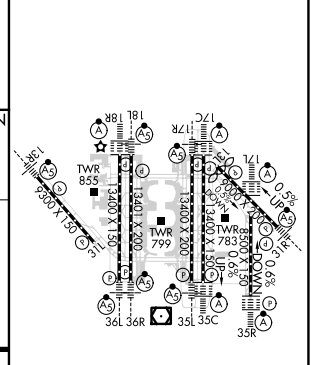
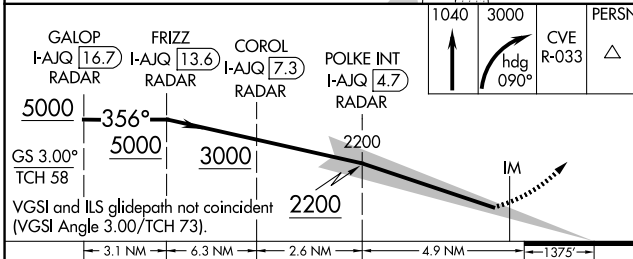
ILS RWY 35R (SA CAT I)

DALLAS-FORT WORTH INTL (DFW)

▽ Simultaneous approach authorized with Rwy 36L/R and Rwy 35L/C. DME required. Requires specific OPSPEC, MSPEC, or LOA approval and use of HUD to DH.		ALSF-2 	MISSED APPROACH: Climb to 1040 then climbing right turn to 3000 on heading 090° and CVE VOR/DME R-033 to PERSN/CVE 22.6 DME and hold.		
D-ATIS ARR 123.775 DEP 135.925	LONE STAR APP CON 119.4	DFW TOWER 126.55 127.5 EAST 124.15 134.9 WEST	GND CON 121.65 121.8 EAST 121.85 WEST	CLNC DEL 128.25	CPDLC



ELEV 607	D TDZE 575
----------	-------------------



CATEGORY	A	B	C	D
S-ILS 35R	RA 144/14 150 DA 725			

SA CATEGORY I ILS - SPECIAL AIRCREW & AIRCRAFT CERTIFICATION REQUIRED

HIRL all Rwys
REL Rwys 13L and 31L
TDZ/CL all Rwys except 13L, and 31L

SC-2, 20 FEB 2025 to 20 MAR 2025

SC-2, 20 FEB 2025 to 20 MAR 2025