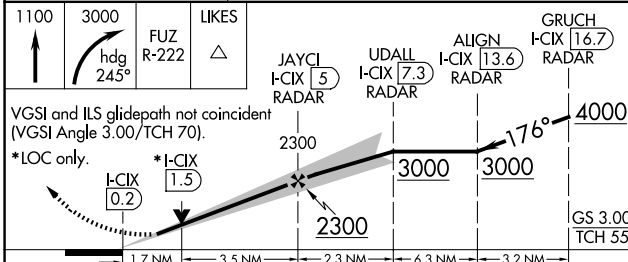
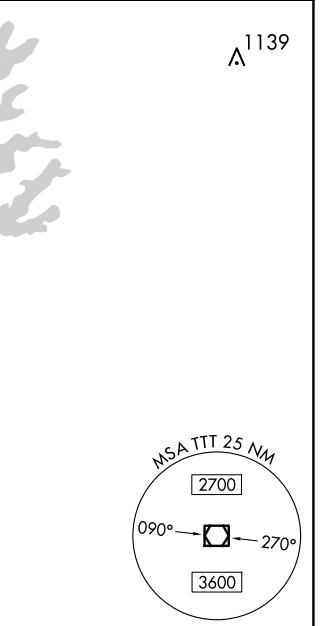
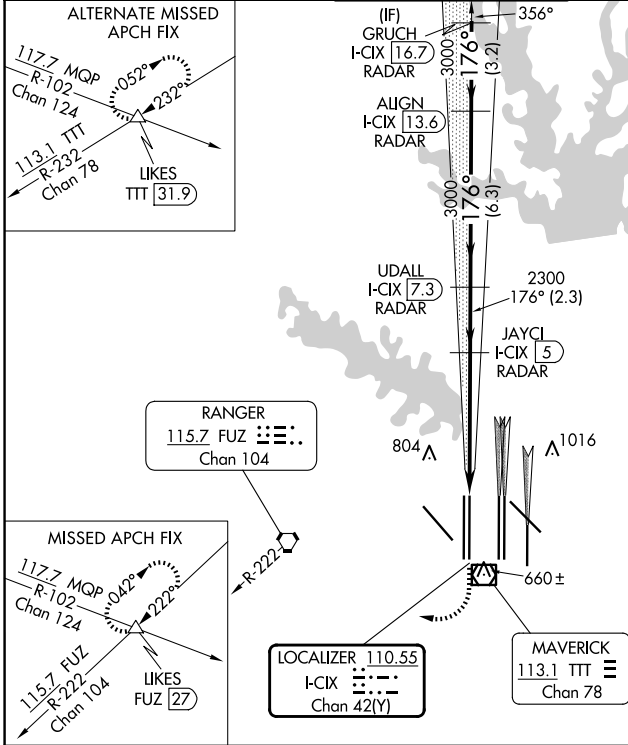


LOC/DME I-CIX 110.55 Chan 42 (Y)	APP CRS 176°	Rwy Idg 13401 13400	18L 602	18R 606
		TDZE 606	606	606
		Apt Elev 606	606	606

ILS or LOC RWY 18L

DALLAS-FORT WORTH INTL (DFW)

RADAR required for procedure entry. DME or RADAR required.		Rwy 18L MALSRR	Rwy 18R ALSFF-2	MISSED APPROACH: Climb to 1100, then climbing right turn to 3000 on heading 245° and FUZ VORTAC R-222 to LIKES INT/FUZ 27 DME and hold.	
<p>Simultaneous approach authorized with Rwy 17L/C/R. For inop ALS, increase S-LOC 18L Cat C/D and Sidestep 18R Cat C/D visibility to 1¼ mile. Inop table does not apply to Sidestep 18R Cats A and B.</p>					
D-ATIS ARR DEP	LONE STAR APP CON	DFW TOWER		GND CON	CLNC DEL
123.775 135.925	118.425	126.55 127.5 124.15	134.9 EAST WEST	121.65 121.8 121.85	EAST WEST
				128.25	CPDLC



CATEGORY	A	B	C	D
S-ILS 18L		802/18	200 (200-½)	
S-LOC 18L	1220/24	618 (700-½)	1220-1⅓	618 (700-1⅓)
SIDESTEP 18R	1220/50	614 (700-1)	1220-1⅓	1220-1½
			614 (700-1⅓)	614 (700-1½)

ELEV 606

TDZE 602 18L
TDZE 606 18R

HIRL all Rwys
REIL Rwys 13L and 31L
TDZ/CL all Rwys except 13L and 31L

FAF to MAP 5.2 NM

Knots	60	90	120	150	180
Min:Sec	5:12	3:28	2:36	2:05	1:44

SC-2, 20 FEB 2025 to 20 MAR 2025

SC-2, 20 FEB 2025 to 20 MAR 2025