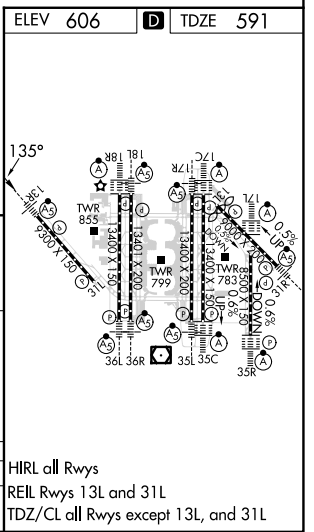
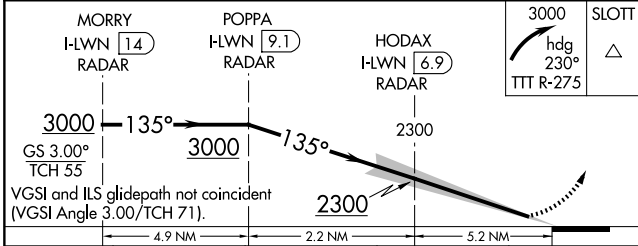
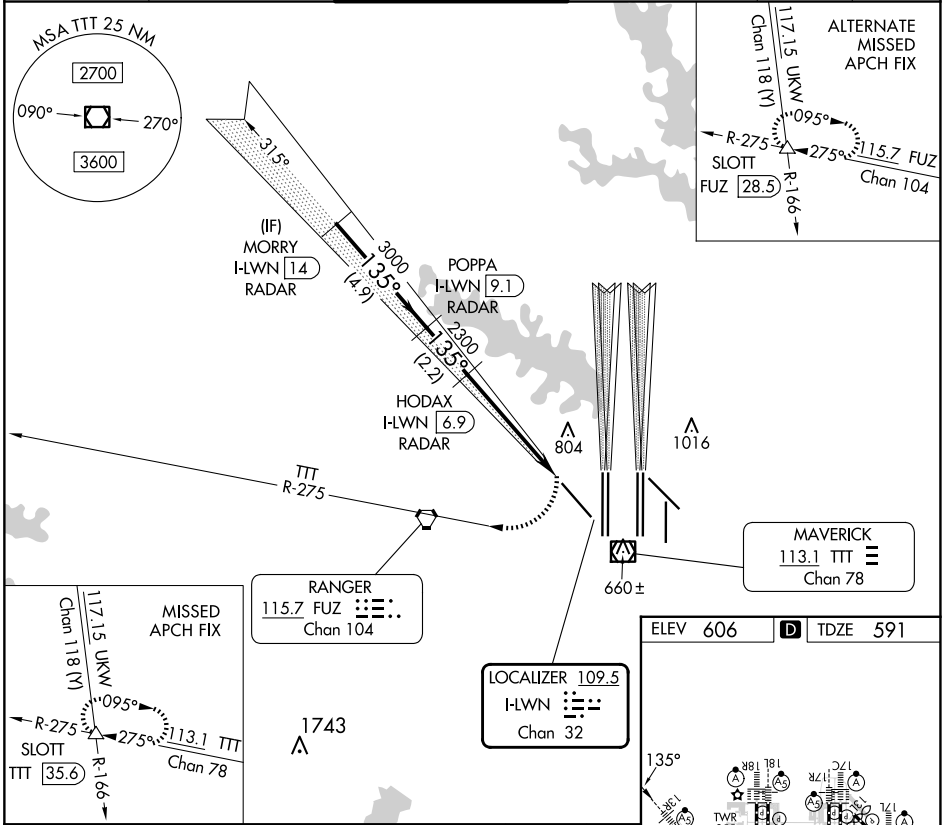


LOC/DME I-LWN 109.5 Chan 32	APP CRS 135°	Rwy Idg 9300 TDZE 591 Apt Elev 606
---	------------------------	---

ILS V RWY 13R (CONVERGING)

DALLAS-FORT WORTH INTL (DFW)

RADAR required for procedure entry.		MALSR 	MISSED APPROACH: Climbing right turn to 3000 on heading 230° and TTT VOR/DME R-275 to SLOTT/TTT 35.6 DME and hold.	
<p>Simultaneous converging approach authorized with Converging ILS Rwy 18L/R and Converging ILS Rwy 17C/R. For inop ALS, increase S-ILS 13R all Cats visibility to 2$\frac{3}{4}$.</p>				
D-ATIS ARR 123.775 DEP 135.925	LONE STAR APP CON 133.15 118.1	DFW TOWER 126.55 127.5 EAST 124.15 134.9 WEST	GND CON 121.65 121.8 EAST 121.85 WEST	CLNC DEL 128.25 CPDLC



CATEGORY	A	B	C	D	HIRL all Rws
S-ILS 13R	1401-2 $\frac{1}{2}$	810 (800-2 $\frac{1}{2}$)	1441-2 $\frac{1}{2}$ 850 (900-2 $\frac{1}{2}$)	NA	REIL Rws 13L and 31L TDZ/CL all Rws except 13L, and 31L

SC-2, 20 FEB 2025 to 20 MAR 2025

SC-2, 20 FEB 2025 to 20 MAR 2025