

KUSSO ONE DEPARTURE (RNAV)
(KUSSO1 .KUSSO) 24MAR22

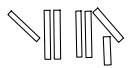
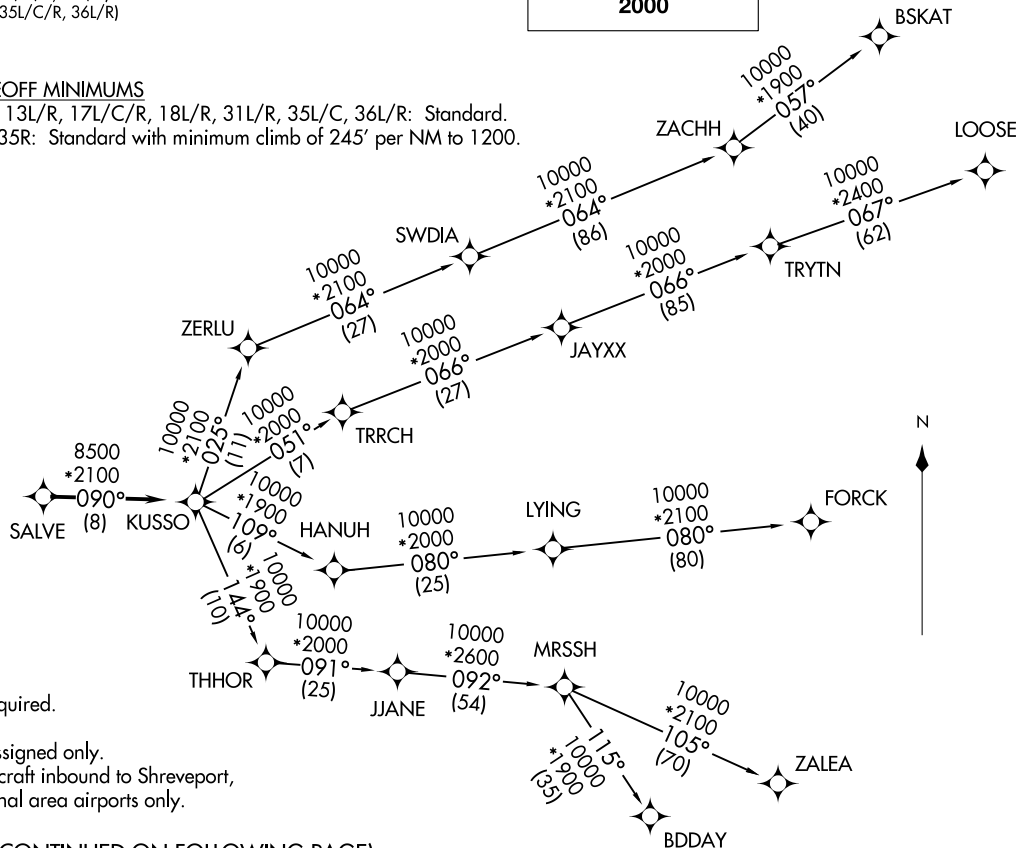
DALLAS-FORT WORTH, TEXAS
DALLAS-FORT WORTH INTL (DFW)

LONE STAR DEP CON
125.2 343.65 (Props Only Rwys 13L/R, 17L/C/R, 18L/R)
124.3 282.275 (Props Only Rwys 31L/R, 35L/C/R, 36L/R)
D-ATIS DEP
135.925
CLNC DEL
128.25
CPDLC
GND CON
121.65 121.8 (EAST)
121.85 (WEST)
DFW TOWER
126.55 127.5 (EAST)
124.15 134.9 (WEST)

TAKEOFF MINIMUMS

Rwys 13L/R, 17L/C/R, 18L/R, 31L/R, 35L/C, 36L/R: Standard.
Rwy 35R: Standard with minimum climb of 245' per NM to 1200.

**TOP ALTITUDE:
2000**



- NOTE: RADAR required.
- NOTE: RNAV 1.
- NOTE: DME/DME/IRU or GPS required.
- NOTE: Props only.
- NOTE: BDDAY Transition: ATC assigned only.
- NOTE: MRSSH Transition: For aircraft inbound to Shreveport, Jackson and Monroe terminal area airports only.

(CONTINUED ON FOLLOWING PAGE)

NOTE: Chart not to scale.

(KUSSO1 .KUSSO) 24305
KUSSO ONE DEPARTURE (RNAV)

DALLAS-FORT WORTH INTL (DFW)
DALLAS-FORT WORTH, TEXAS

AL-6039 (FAA)

KUSSO ONE DEPARTURE (RNAV)



DEPARTURE ROUTE DESCRIPTION

TAKEOFF RUNWAYS 13L/R, 17L/C/R, 18L/R, 31L/R, 35L/C/R, 36L/R: Climb on assigned heading for RADAR vectors to SALVE. Thence

. . . . on track 090° to KUSSO, then on (transition). Maintain 2000. Expect filed altitude 10 minutes after departure.

- BDDAY TRANSITION (KUSSO1.BDDAY)
- BSKAT TRANSITION (KUSSO1.BSKAT)
- FORCK TRANSITION (KUSSO1.FORCK)
- LOOSE TRANSITION (KUSSO1.LOOSE)
- MRSSH TRANSITION (KUSSO1.MRSSH)
- ZALEA TRANSITION (KUSSO1.ZALEA)

SC-2, 20 FEB 2025 to 20 MAR 2025

SC-2, 20 FEB 2025 to 20 MAR 2025