

| | | |
|---------------------------------|------------------------|---|
| WAAS CH 4000B W17B | APP CRS 176° | Rwy Idg 8500 TDZE 545 Apt Elev 607 |
|---------------------------------|------------------------|---|

RNAV (GPS) RWY 17L

DALLAS-FORT WORTH INTL (DFW)

⚠ For uncompensated Baro-VNAV systems, LNAV/VNAV NA below -5°C (23°F) or above 54°C (130°F). DME/DME RNP-0.3 NA. Simultaneous approach authorized with Rwy 17C/R and Rwy 18L/R. LNAV procedure NA during simultaneous operations. Use of FD or AP providing RNAV track guidance required during simultaneous operations.

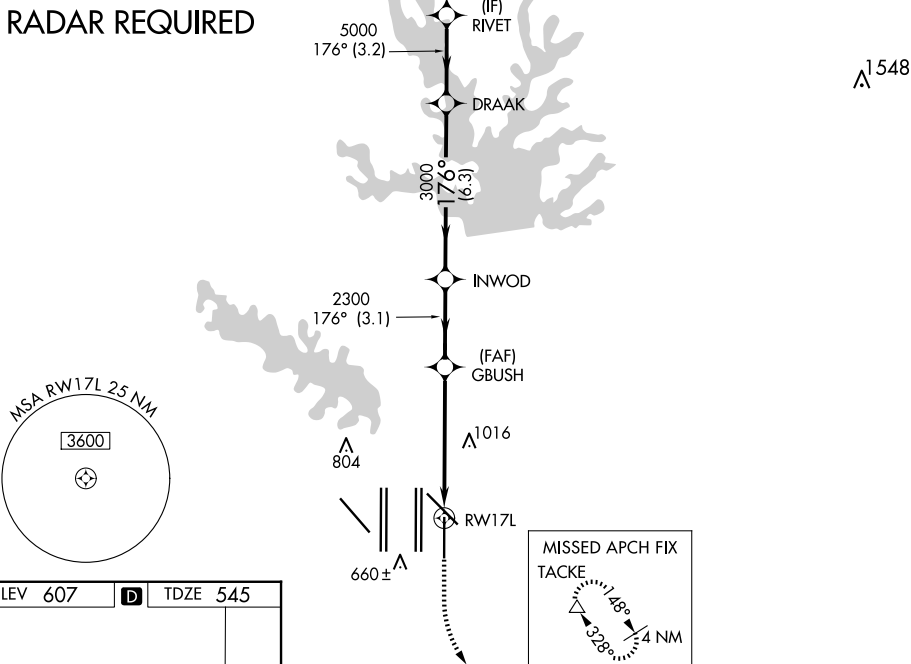
ALSF-2



MISSED APPROACH: Climb to 1020 then climbing left turn to 3000 direct TACKE and hold.

| | | | | | |
|--|-----------------------------------|---|---|---------------------------|-------|
| D-ATIS ARR 123.775 DEP 135.925 | LONE STAR APP CON 119.4 | DFW TOWER 126.55 127.5 EAST 124.15 134.9 WEST | GND CON 121.65 121.8 EAST 121.85 WEST | CLNC DEL 128.25 | CPDLC |
|--|-----------------------------------|---|---|---------------------------|-------|

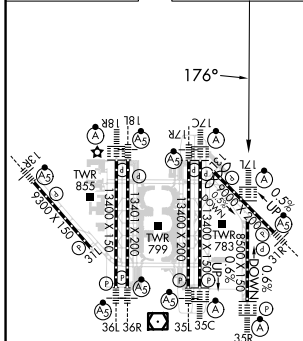
RADAR REQUIRED



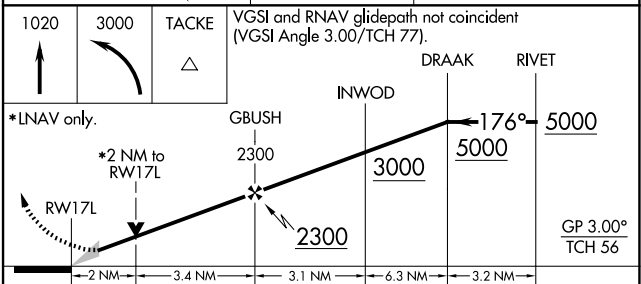
SC-2, 20 FEB 2025 to 20 MAR 2025

SC-2, 20 FEB 2025 to 20 MAR 2025

| | | |
|-----------------|----------|-----------------|
| ELEV 607 | D | TDZE 545 |
|-----------------|----------|-----------------|



HIRL all Rwys
REIL Rwys 13L and 31L
TDZ/CL all Rwys except 13L and 31L



| | | | | |
|--------------|---------|-------------|--------------|--------------|
| CATEGORY | A | B | C | D |
| LPV DA | | 745/18 | 200 (200-½) | |
| LNAV/VNAV DA | | 1063/60 | 518 (500-1¼) | |
| LNAV MDA | 1240/24 | 695 (700-½) | 1240-1½ | 695 (700-1½) |