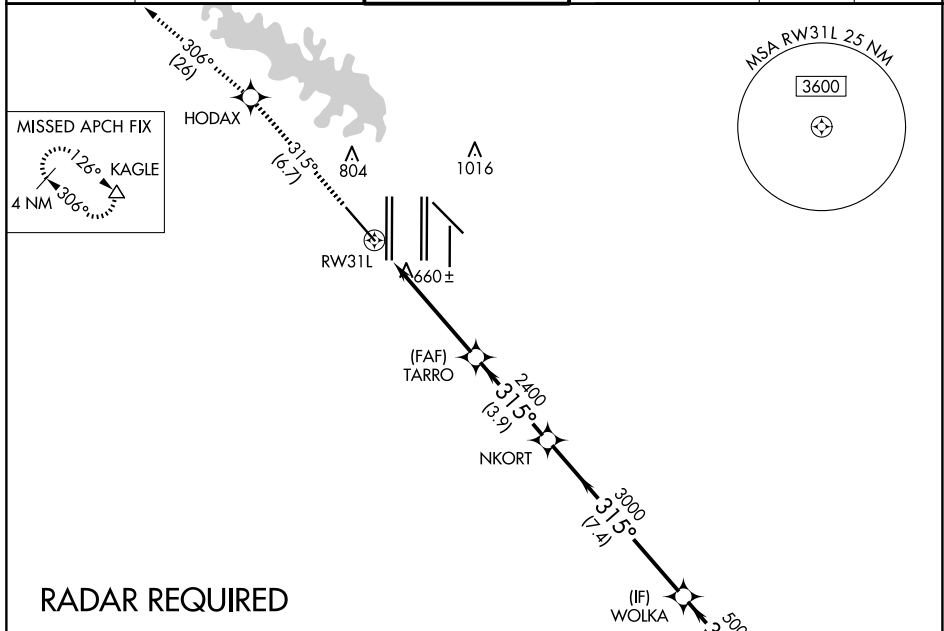


APP CRS 315°	Rwy Idg 9300 TDZE 581 Apt Elev 607
------------------------	---

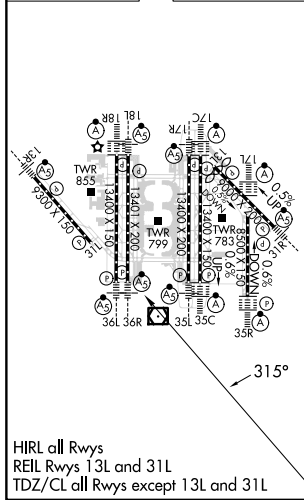
RNAV (RNP) Z RWY 31L

DALLAS-FORT WORTH INTL (DFW)

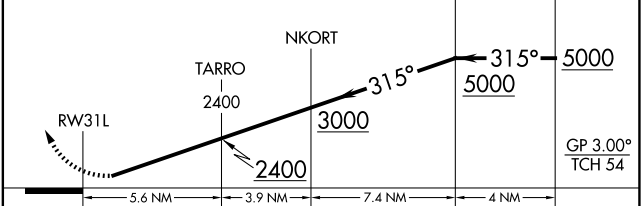
<p>▼ For uncompensated Baro-VNAV systems, procedure NA below -4°C (25°F) or above 54°C (130°F). Simultaneous approach authorized with Rwy 31R. GPS Required. Use of FD or AP providing RNAV track guidance required during simultaneous operations.</p>		<p>MISSED APPROACH: Climb to 3000 on track 315° to HODAX and on track 306° to KAGLE and hold.</p>			
D-ATIS ARR 123.775 DEP 135.925	LONE STAR APP CON 118.425 127.075 119.4	DFW TOWER 126.55 127.5 EAST 124.15 134.9 WEST	GND CON 121.65 121.8 EAST 121.85 WEST	CLNC DEL 128.25	CPDLC



ELEV 607	D	TDZE 581
-----------------	----------	-----------------



3000	HODAX	KAGLE	VGSI and RNAV glidepath not coincident (VGSI Angle 3.13/TCH 72).
↑ fr 315°	✧	△ tr 306°	



CATEGORY	A	B	C	D
RNP 0.30 DA	951/60 370 (400-1¼)			

AUTHORIZATION REQUIRED

SC-2, 20 FEB 2025 to 20 MAR 2025

SC-2, 20 FEB 2025 to 20 MAR 2025