

# RNAV (RNP) Z RWY 31R

DALLAS-FORT WORTH INTL (DFW)

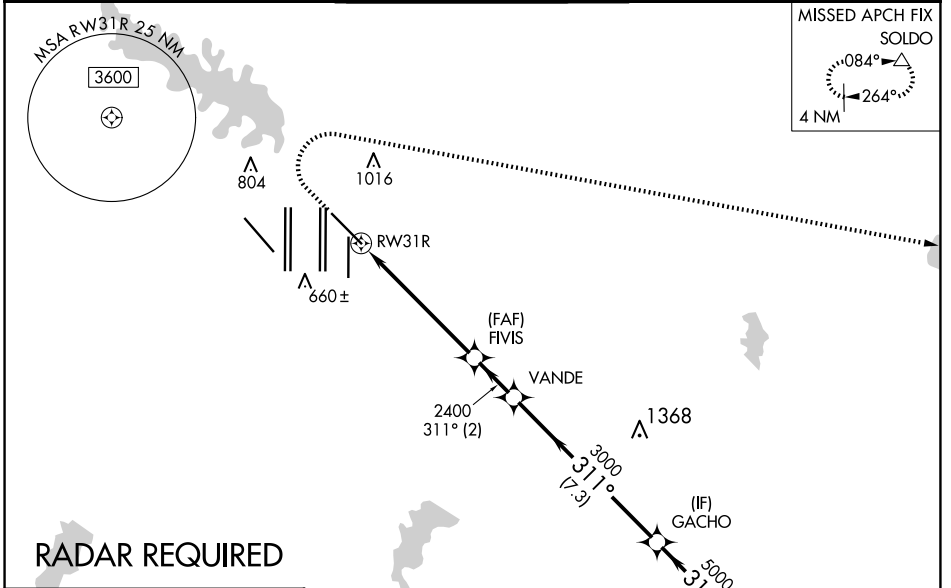
|                        |                        |
|------------------------|------------------------|
| APP CRS<br><b>311°</b> | Rwy Idg<br><b>8373</b> |
|                        | TDZE<br><b>523</b>     |
|                        | Apt Elev<br><b>607</b> |

▼ For uncompensated Baro-VNAV systems, procedure NA below -4°C (25°F) or above 54°C (130°F). For inop MALSR, increase RNP 0.14 all Cats visibility to RVR 5100, RNP 0.23 all Cats visibility to 1/8 mile, RNP 0.30 all Cats visibility to 1/2 mile. Simultaneous approach authorized with Rwy 31L. GPS Required. Use of FD or AP providing RNAV track guidance required during simultaneous operations.



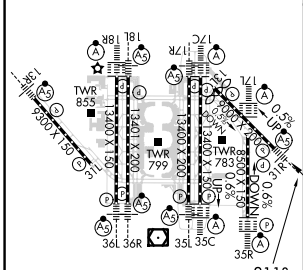
MISSED APPROACH: Climb to 1100 then climbing right turn to 3000 direct SOLDO and hold.

|  |   |   |   |                           |       |
|--|---|---|---|---------------------------|-------|
| D-ATIS<br>ARR <b>123.775</b><br>DEP <b>135.925</b> | LONE STAR APP CON<br><b>135.5 125.2</b> | DFW TOWER<br><b>126.55 127.5 EAST</b><br><b>124.15 134.9 WEST</b> | GND CON<br><b>121.65 121.8 EAST</b><br><b>121.85 WEST</b> | CLNC DEL<br><b>128.25</b> | CPDLC |
|--|---|---|---|---------------------------|-------|



### RADAR REQUIRED

|          |          |          |
|----------|----------|----------|
| ELEV 607 | <b>D</b> | TDZE 523 |
|----------|----------|----------|



HIRL all Rwys  
REIL Rwys 13L and 31L  
TDZ/CL all Rwys except 13L and 31L

|             |      |            |  |
|-------------|------|------------|--|
| 1100        | 3000 | SOLDO      | VGSI and RNAV glidepath not coincident (VGSI Angle 3.00/TCH 69). |
| ↑           | ↷    | △          |  |
| RWY 31R     |      | FIVIS 2400 | VANDE 3000   |
| 5.8 NM      |      | 2 NM       | 7.3 NM   |
| 311°        |      | 311°       | 311°   |
|             |      | 2400       | 5000   |
|             |      |            | 5000   |
|             |      |            | GP 3.00° TCH 53  |
| CATEGORY    | A    | B          | C  |
| RNP 0.14 DA |      | 838/27     | 315 (300-5%)   |
| RNP 0.23 DA |      | 928/44     | 405 (400-7%)   |
| RNP 0.30 DA |      | 987/55     | 464 (400-1)  |

## AUTHORIZATION REQUIRED