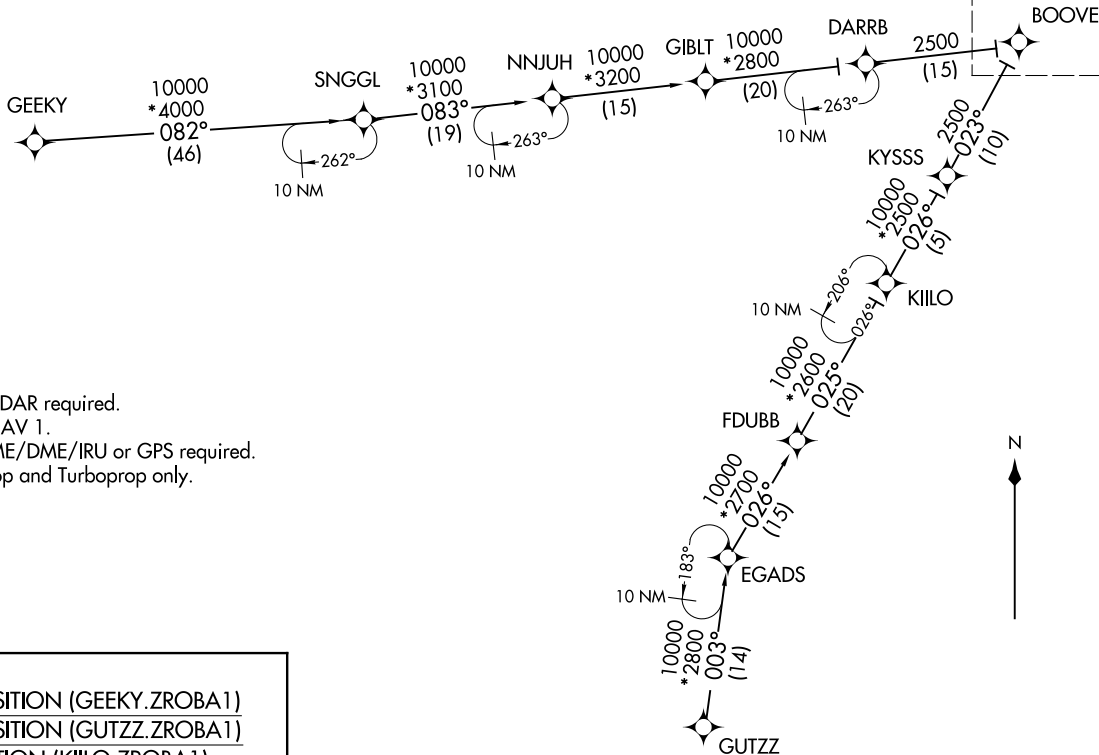


ZROBA ONE ARRIVAL (RNAV) Transition Routes
 (BOOVE.ZROBA1) 26MAR20

DALLAS-FORT WORTH, TEXAS
 DALLAS-FORT WORTH INTL (DFW)

LONE STAR APP CON
 119.875 284.65
 D-ATIS ARR
 123.775



NOTE: RADAR required.
 NOTE: RNAV 1.
 NOTE: DME/DME/IRU or GPS required.
 NOTE: Prop and Turboprop only.



See following page
 for arrival route.

GEEKY TRANSITION (GEEKY.ZROBA1)
GUTZZ TRANSITION (GUTZZ.ZROBA1)
KIILLO TRANSITION (KIILLO.ZROBA1)
SNGGL TRANSITION (SNGGL.ZROBA1)

(CONTINUED ON FOLLOWING PAGE)

NOTE: Chart not to scale.

(BOOVE.ZROBA1) 24305
 ZROBA ONE ARRIVAL (RNAV) Transition Routes

AL-6039 (FAA)
 DALLAS-FORT WORTH INTL (DFW)
 DALLAS-FORT WORTH, TEXAS

(BOOVE.ZROBA1) 24305

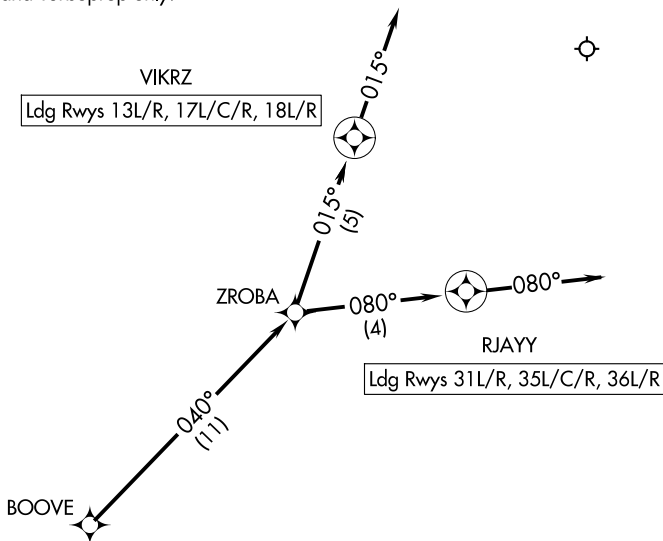
AL-6039 (FAA)

DALLAS-FORT WORTH INTL (DFW)
DALLAS-FORT WORTH, TEXAS

ZROBA ONE ARRIVAL (RNAV) Arrival Route

LONE STAR APP CON
119.875 284.65
D-ATIS ARR
123.775

- NOTE: RADAR required.
- NOTE: RNAV 1.
- NOTE: DME/DME/IRU or GPS required.
- NOTE: Prop and Turboprop only.



NOTE: Chart not to scale.

ARRIVAL ROUTE DESCRIPTION

From BOOVE on track 040° to ZROBA.

Landing RUNWAYS 13L/R, 17L/C/R, 18L/R: From ZROBA on track 015° to VIKRZ, then on track 015°. Expect RADAR vectors to final approach course.

Landing RUNWAYS 35L/C/R, 36L/R, 31L/R: From ZROBA on track 080° to RJAYY, then on track 080°. Expect RADAR vectors to final approach course.

ZROBA ONE ARRIVAL (RNAV) Arrival Route

(BOOVE.ZROBA1) 26MAR20

DALLAS-FORT WORTH, TEXAS
DALLAS-FORT WORTH INTL (DFW)

SC-2, 20 FEB 2025 to 20 MAR 2025

SC-2, 20 FEB 2025 to 20 MAR 2025