

WAAS CH <b>70541</b> <b>W28A</b>	APP CRS <b>276°</b>	Rwy Idg TDZE Apt Elev	<b>4201</b> <b>1090</b> <b>1090</b>
--	------------------------	-----------------------------	---

# RNAV (GPS) RWY 28

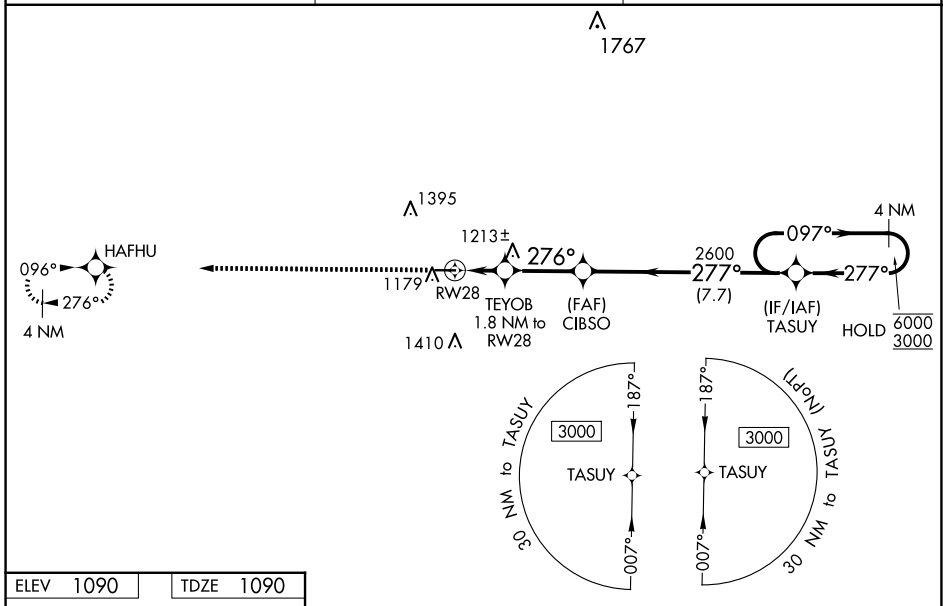
NEW CASTLE HENRY COUNTY MARLATT FLD (UWL)

RNP APCH - GPS.

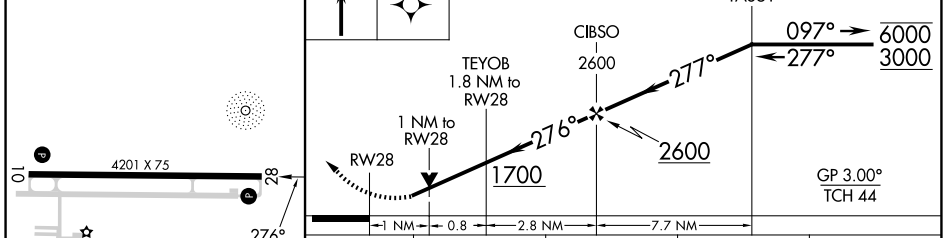
**▼** Rwy 28 helicopter visibility reduction below 3/4 SM NA. For uncompensated Baro-VNAV systems, LNAV/VNAV NA below -17°C or above 54°C. Baro-VNAV and VDP NA when using AID altimeter setting. When local altimeter setting not received, use Anderson altimeter setting; increase LPV DA to 1412 feet; increase LNAV/VNAV DA to 1437 feet; increase all MDAs 80 feet, LNAV visibility Cat C/D 3/8 SM, and Circling visibility Cat C/D 1/4 SM.

**▲** MISSED APPROACH: Climb to 3000 direct HAFHU and hold.

AWOS-3 <b>132.375</b>	INDIANAPOLIS APP CON <b>135.45 317.8</b>	UNICOM <b>123.05 (CTAF) 0</b>
--------------------------	---	----------------------------------



ELEV 1090	TDZE 1090
-----------	-----------



CATEGORY	A	B	C	D
LPV DA		1343-1	253 (300-1)	
LNAV/VNAV DA		1368-1	278 (300-1)	
LNAV MDA		1480-1	390 (400-1)	
<b>C</b> CIRCLING	1520-1 430 (500-1)	1540-1 450 (500-1)	1720-1 3/4 630 (700-1 3/4)	1720-2 630 (700-2)

# RNAV (GPS) RWY 28

EC-2, 20 FEB 2025 to 20 MAR 2025

EC-2, 20 FEB 2025 to 20 MAR 2025