

WAAS CH <b>97630</b> <b>W23A</b>	APP CRS <b>234°</b>	Rwy Idg TDZE <b>969</b> Apt Elev <b>977</b>	<b>3520</b>
--	------------------------	---	-------------

# RNAV (GPS) RWY 23

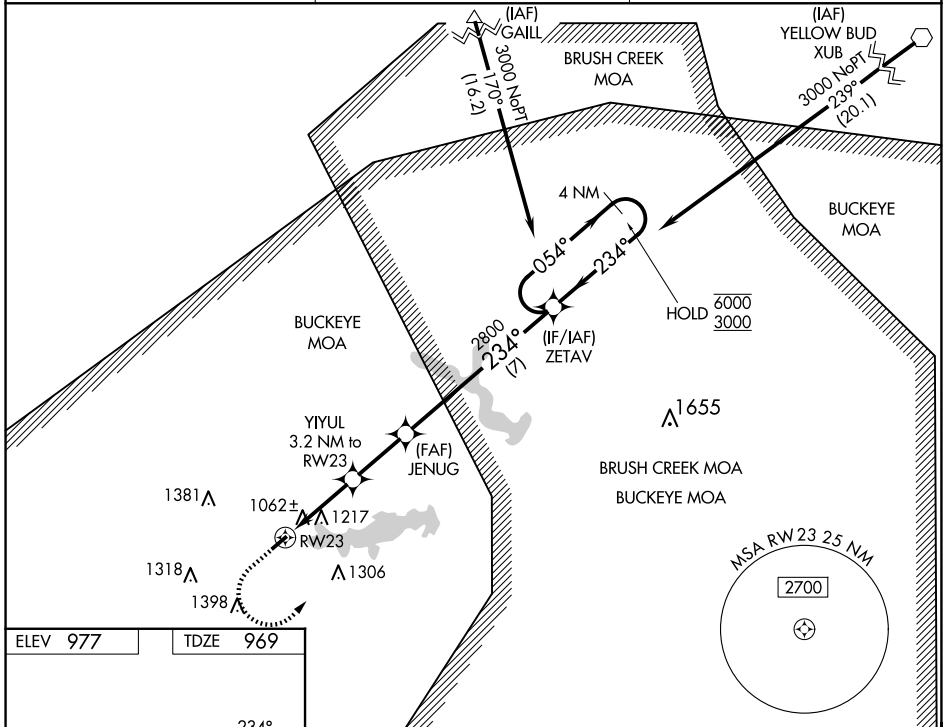
HIGHLAND COUNTY (HOC)

RNP APCH - GPS.

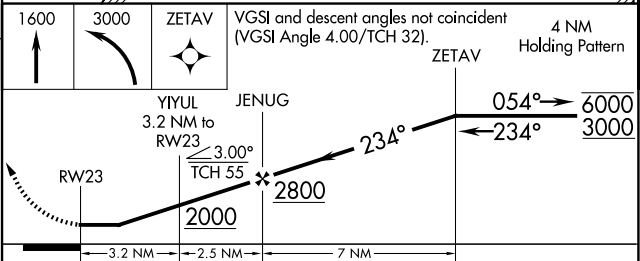
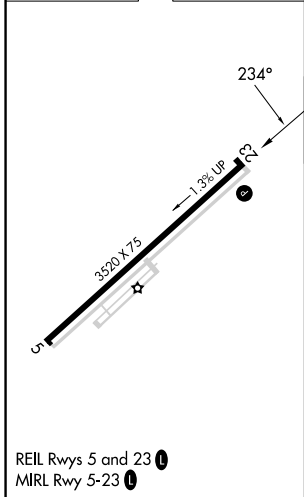
**NA** Procedure NA at night. Rwy 23 helicopter visibility reduction below 1 SM NA. When local altimeter setting not received, use Wilmington Air Park altimeter setting: increase all MDA 60 feet; increase LNAV Cats C and D visibility  $\frac{1}{4}$  SM, increase LP Cats C and D visibility  $\frac{1}{8}$  SM, and increase Circling Cats C and D visibility  $\frac{1}{4}$  SM.

**MISSED APPROACH:** Climb to 1600 then climbing left turn to 3000 direct ZETAV and hold.

AWOS-3 <b>118.175</b>	INDIANAPOLIS CENTER <b>135.575 290.5</b>	UNICOM <b>123.05 (CTAF)</b>
--------------------------	---	--------------------------------



ELEV 977	TDZE 969
----------	----------



CATEGORY	A	B	C	D
LP MDA	1320-1 351 (400-1)			
LNAV MDA	1480-1	511 (600-1)	1480-1 $\frac{3}{8}$	511 (600-1 $\frac{3}{8}$ )
CIRCLING	1500-1 523 (600-1)	1520-1 543 (600-1)	1700-2 723 (800-2)	1700-2 $\frac{1}{4}$ 723 (800-2 $\frac{1}{4}$ )

REIL Rwy 5 and 23 **1**  
MIRL Rwy 5-23 **1**

EC-2, 20 FEB 2025 to 20 MAR 2025

EC-2, 20 FEB 2025 to 20 MAR 2025