

WAAS CH 42818 W25A	APP CRS 246°	Rwy Idg 5003 TDZE 147 Apt Elev 147
--	------------------------	---

RNAV (GPS) RWY 25

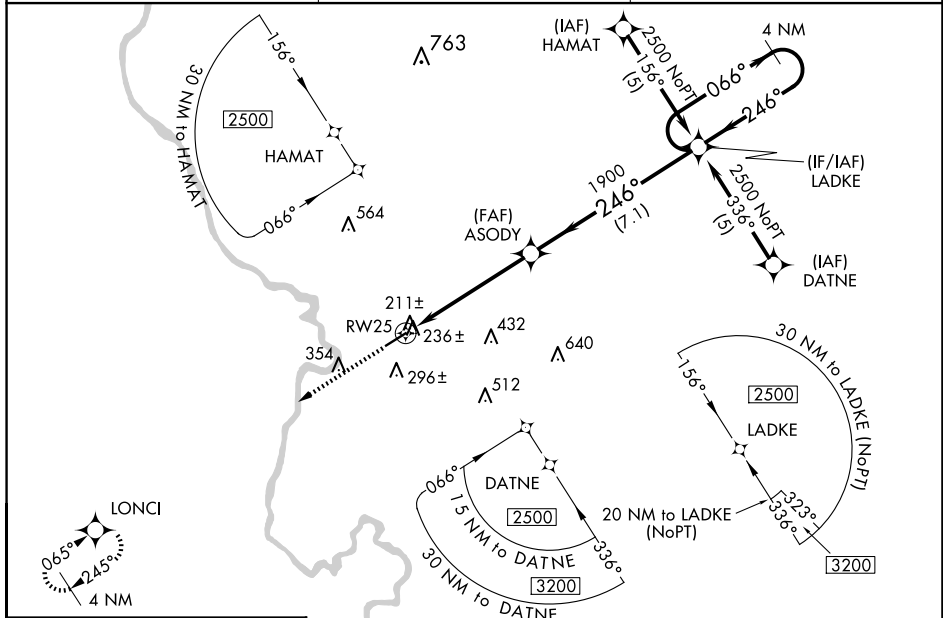
MARLBORO COUNTY JETPORT/H E AVENT FLD (BBP)

RNP APCH.

▼ Baro-VNAV NA when using Florence altimeter setting. For uncompensated Baro-VNAV systems, LNAV/VNAV NA below -15°C or above 47°C. Rwy 25 helicopter visibility reduction below 3/4 SM NA. When local altimeter setting not received, use Florence altimeter setting and increase all DA 61 feet and MDA 80 feet. Increase LPV all Cats, and LNAV Cat C and D visibility 1/4 mile.

MISSED APPROACH: Climb to 2500 direct LONCI and hold.

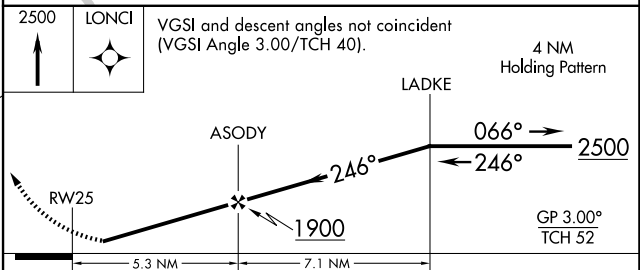
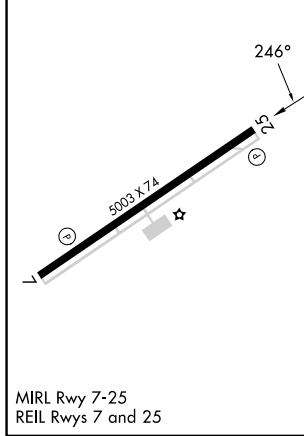
AWOS-3PT 123.825	FLORENCE APP CON ★ 118.6 341.7	UNICOM 122.8 (CTAF)
----------------------------	--	-------------------------------



SE-2, 20 FEB 2025 to 20 MAR 2025

SE-2, 20 FEB 2025 to 20 MAR 2025

ELEV 147	TDZE 147
----------	----------



CATEGORY	A	B	C	D
LPV DA	441-1 294 (300-1)			
LNAV/VNAV DA	621-1 3/4 474 (500-1 3/4)			
LNAV MDA	680-1	533 (600-1)	680-1 1/2 533 (600-1 1/2)	680-1 3/4 533 (600-1 3/4)