

NDB/DME YP <b>317</b>	APP CRS <b>237°</b>	Rwy ldg TDZE Apt Elev	<b>6000</b> <b>90</b> <b>91</b>
Chan <b>122 (117.5)</b>			

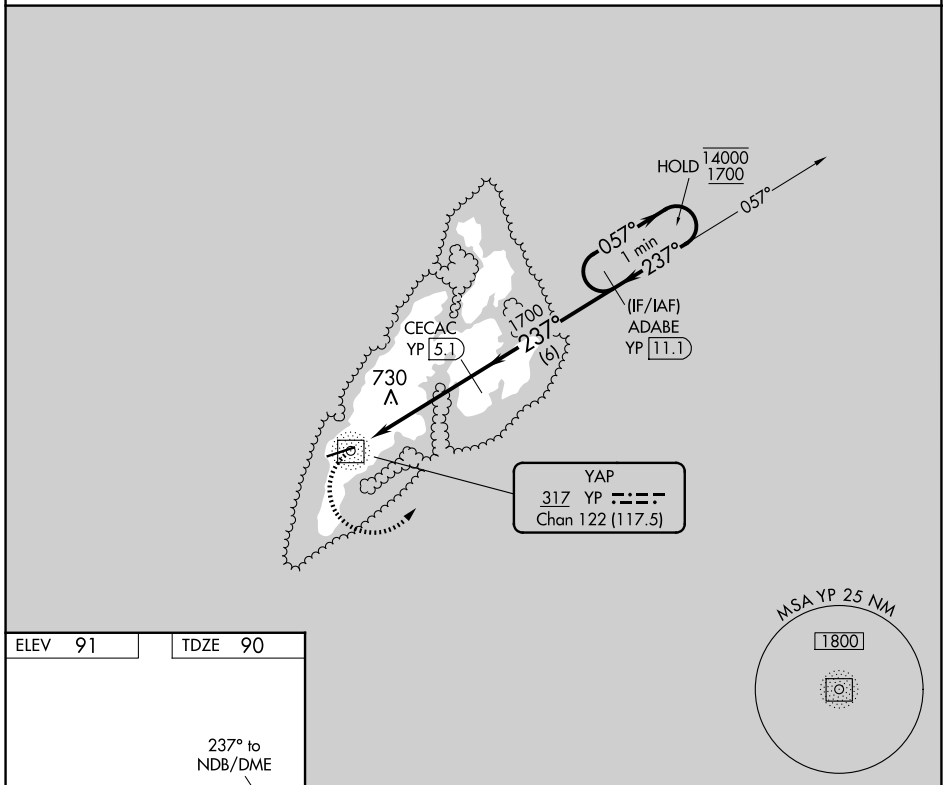
# NDB/DME RWY 25

YAP INTL (T11)(PTYA)

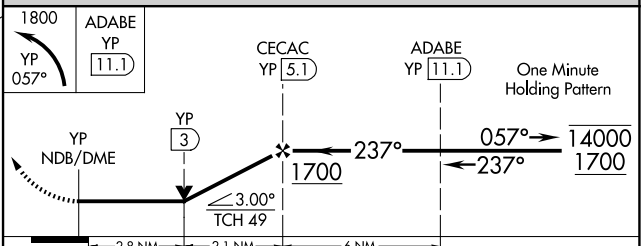
**⚠** Circling NA north of Rwy 7-25.  
No controlled airspace below 5500.

**⚠** MISSED APPROACH: Climbing left turn to 1800 on 057° bearing from YP NDB/DME to ADABE/11.1 DME and hold.

YAP RADIO  
**123.6** (CTAF)



ELEV 91	TDZE 90
---------	---------



CATEGORY	A	B	C	D
S-25	1040-1¼ 950 (1000-1¼)	1040-1½ 950 (1000-1½)	1040-3	950 (1000-3)
<b>CIRCLING</b>	1040-1¼ 949 (1000-1¼)	1040-1½ 949 (1000-1½)	1040-3	949 (1000-3)

MIRL Rwy 7-25 **⓪**  
REIL Rws 7 and 25 **⓪**

PAC, 20 FEB 2025 to 17 APR 2025

PAC, 20 FEB 2025 to 17 APR 2025