

NDB/DME MAJ 316	APP CRS 062°	Rwy ldg 7913
Chan 114 (116.7)	TDZE 7	Apt Elev 7

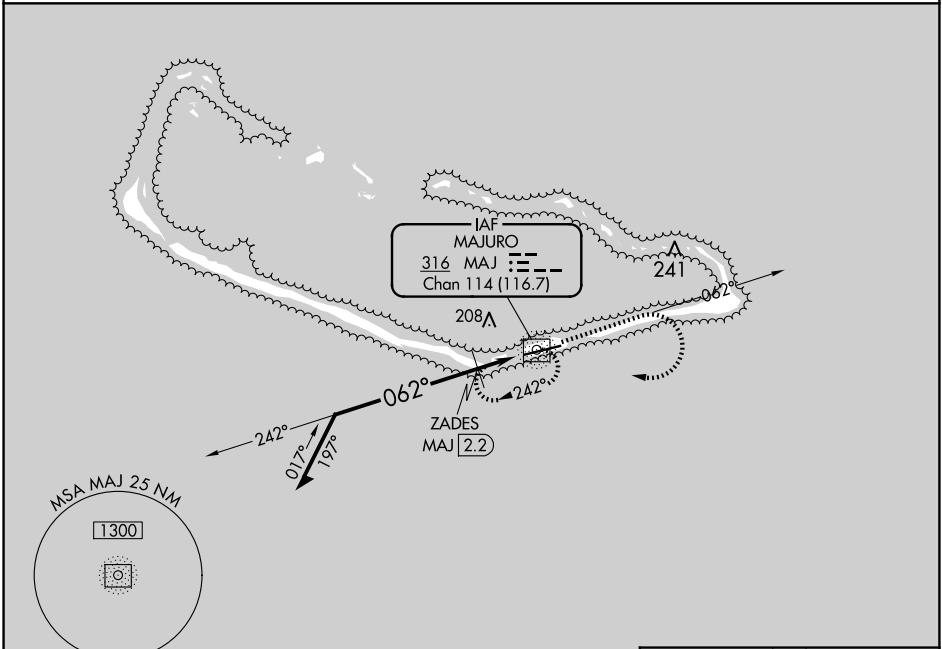
NDB RWY 7

AMATA KABUA INTL (MAJ)(PKMJ)

▼ Rwy 7 helicopter visibility reduction below 3/4 SM NA. Obtain local altimeter setting on CTAF; when not received, procedure NA. Uncontrolled airspace below 5500.

MISSED APPROACH: Climb to 1000 on MAJ NDB/DME bearing 062° then climbing right turn to 1300 direct MAJ NDB/DME and hold.

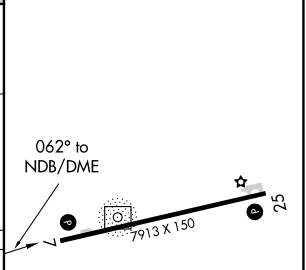
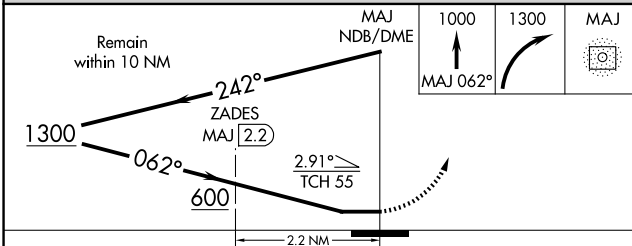
MAJURO RADIO
123.6 (CTAF) **①**



PAC, 20 FEB 2025 to 17 APR 2025

PAC, 20 FEB 2025 to 17 APR 2025

ELEV 7	TDZE 7
--------	--------



CATEGORY	A	B	C	D
S-7	600-1	593 (600-1)	600-1¾	593 (600-1¾)
☐ CIRCLING	600-1	593 (600-1)	600-1¾ 593 (600-1¾)	600-2 593 (600-2)
ZADES FIX MINIMUMS (DME REQUIRED)				
S-7	520-1	513 (600-1)	520-1⅜	513 (600-1⅜)
☐ CIRCLING	520-1	513 (600-1)	520-1½ 513 (600-1½)	560-2 553 (600-2)

MIRL Rwy 7-25 **①**
REIL Rws 7 and 25 **①**

NDB RWY 7