

APP CRS	Rwy Idg	<b>7913</b>
<b>246°</b>	TDZE	<b>7</b>
	Apt Elev	<b>7</b>

# RNAV (GPS) RWY 25

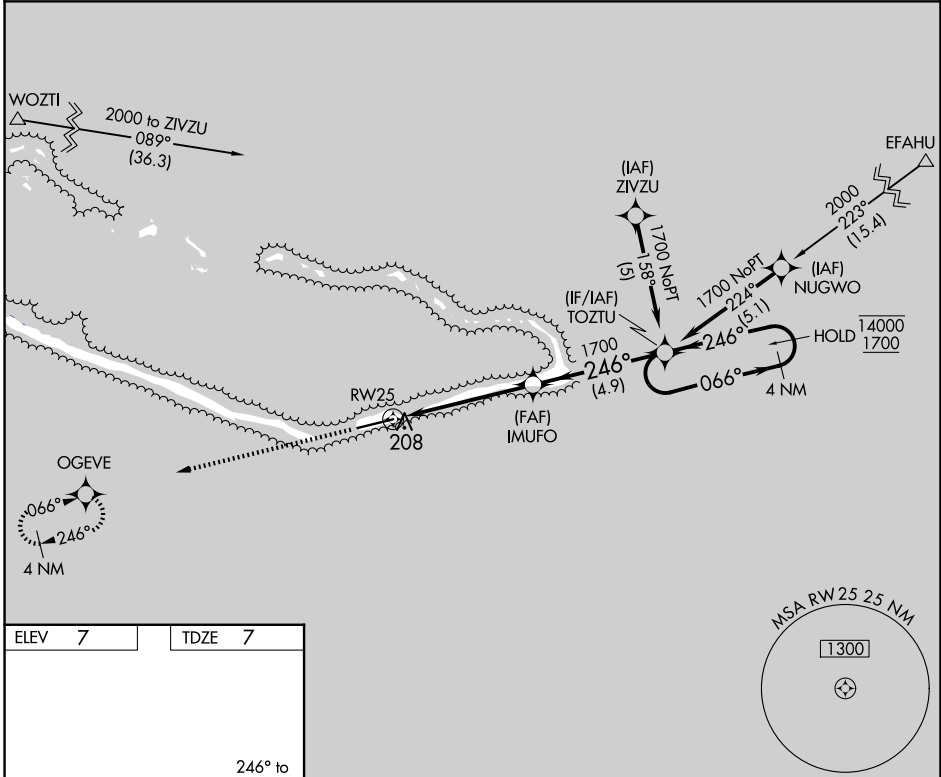
AMATA KABUA INTL (MAJ)(PKMJ)

RNP APCH-GPS.

**▼** Rwy 25 helicopter visibility reduction below 3/4 SM NA. Obtain local altimeter setting on CTAF; when not received, procedure NA. Uncontrolled airspace below 5500.

MISSED APPROACH: Climb to 1700 direct OGEVE and hold.

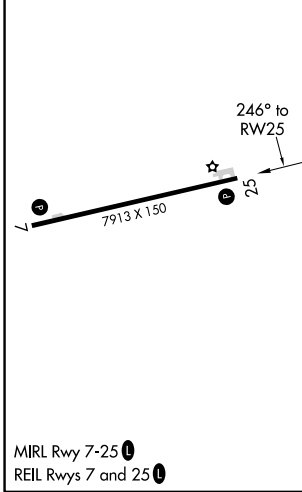
MAJURO RADIO  
**123.6 (CTAF) 0**



PAC, 20 FEB 2025 to 17 APR 2025

PAC, 20 FEB 2025 to 17 APR 2025

ELEV	7	TDZE	7
------	---	------	---



1700	OGEVE	VGSI and RNAV glidepath not coincident (VGSI Angle 3.00/TCH 46).	
		IMUFO	TOZTU 4 NM Holding Pattern
		1.3 NM to RWY 25	1700
		≤ 3.00° TCH 54	066° → 14000 ← 246° 1700
		1.3	3.9 NM
		4.9 NM	
CATEGORY	A	B	C
LNAV MDA	460-1	453 (500-1)	460-1 3/8 453 (500-1 3/8)
<b>C</b> CIRCLING	520-1	513 (600-1)	520-1 1/2 513 (600-1 1/2) 560-2 553 (600-2)

MAJURO ATOLL, MH  
Orig-F 14JUL22

07°04'N-171°16'E

# AMATA KABUA INTL (MAJ)(PKMJ)

## RNAV (GPS) RWY 25