

RED OAK, IOWA


AL-6051 (FAA)

21084

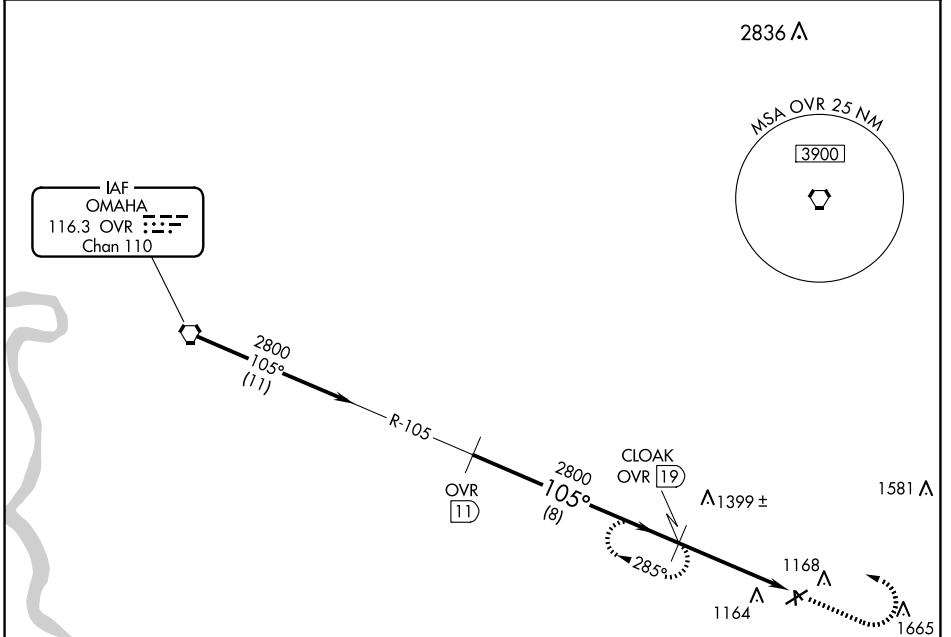
VORTAC OVR 116.3 Chan 110	APP CRS 105°	Rwy Idg TDZE Apt Elev	N/A N/A 1045
---	------------------------	-----------------------------	---

VOR/DME-A

RED OAK MUNI (RDK)

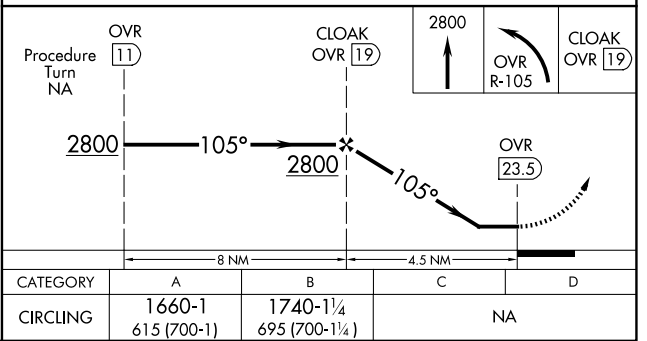
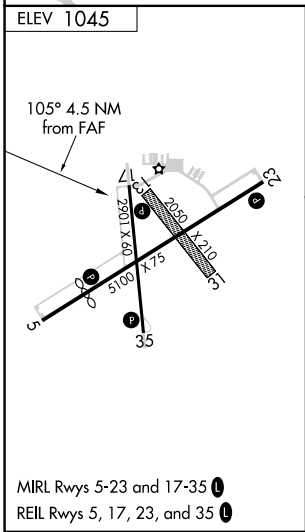
 Circling NA to Rwys 13 and 31.
 MISSED APPROACH: Climb to 2800 then left turn via OVR R-105 to CLOAK/19 DME and hold.

AWOS-3P 123.925	OMAHA APP CON 124.5 263.0	UNICOM 122.8 (CTAF) 
---------------------------	-------------------------------------	---



NC-3, 20 FEB 2025 to 20 MAR 2025

NC-3, 20 FEB 2025 to 20 MAR 2025



RED OAK, IOWA
Amdt 5A 25MAR21

41°01'N-95°16'W

RED OAK MUNI (RDK)

VOR/DME-A