

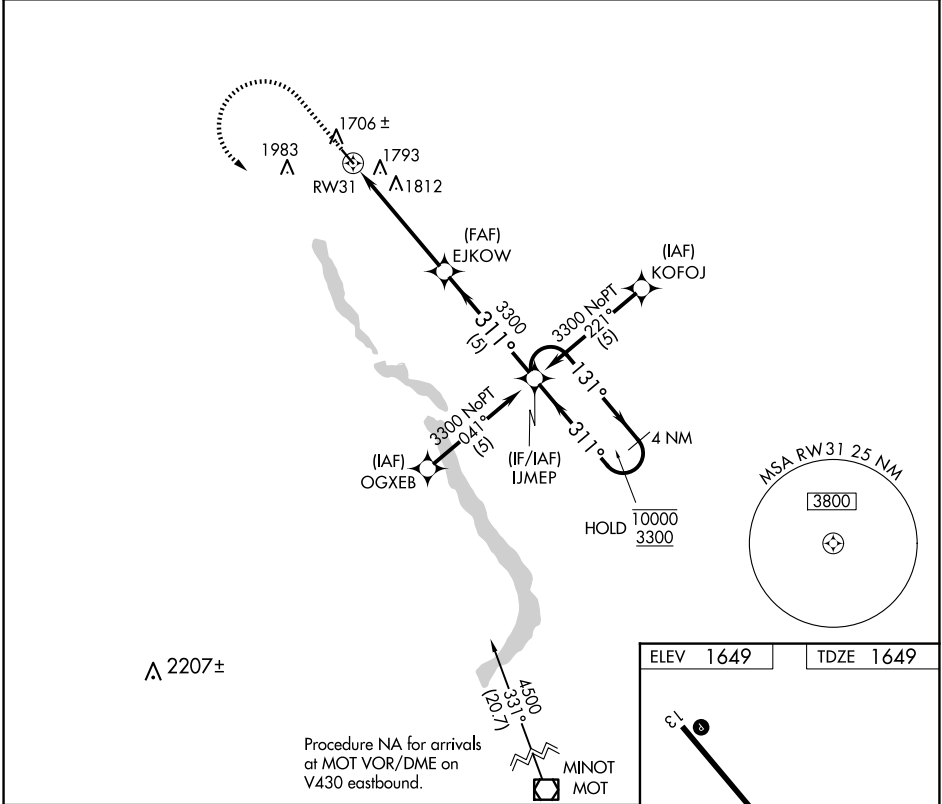
APP CRS	Rwy Idg	3599
311°	TDZE	1649
	Apt Elev	1649

RNAV (GPS) RWY 31

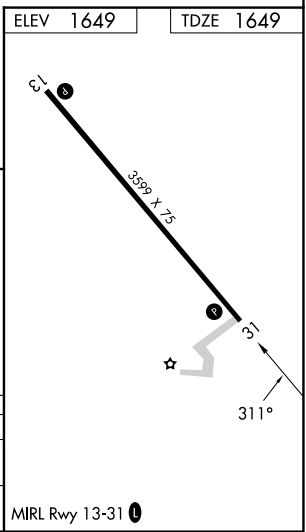
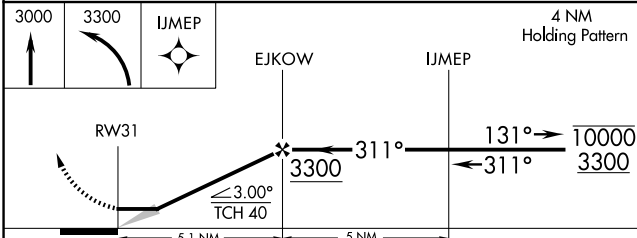
MOHALL MUNI (HBC)

RNP APCH.	MISSED APPROACH: Climb to 3000 then climbing left turn to 3300 direct IJMEP and hold.
NA Use Minot Int'l altimeter setting.	

MOT ASOS 118.725	MINOT APP CON ★ 119.6 363.8	UNICOM 122.8 (CTAF) 0
----------------------------	---------------------------------------	---------------------------------



Procedure NA for arrivals at MOT VOR/DME on V430 eastbound.



CATEGORY	A	B	C	D
LNVA MDA	2180-1 531 (600-1)		2180-1½ 531 (600-1½)	NA
CIRCLING	2240-1 591 (600-1)		2380-2 731 (800-2)	NA

NC-1, 20 FEB 2025 to 20 MAR 2025

NC-1, 20 FEB 2025 to 20 MAR 2025