

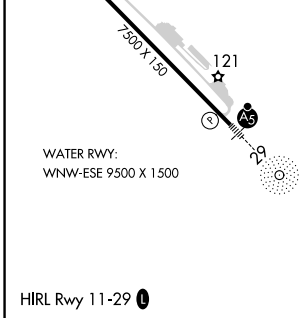
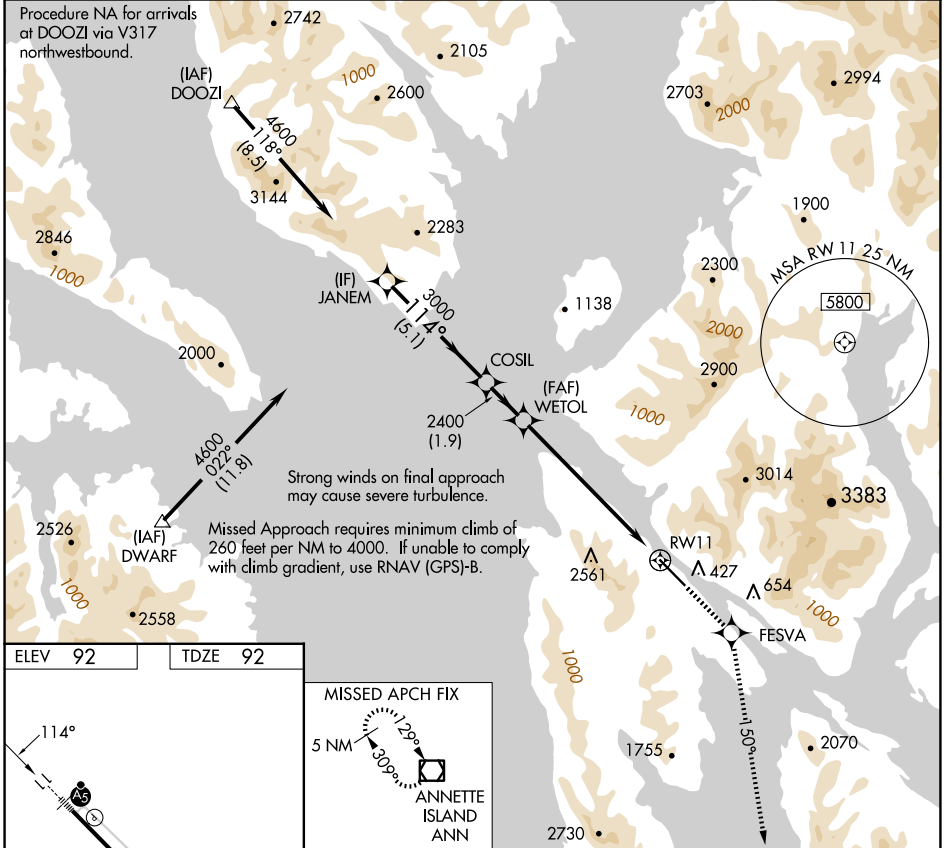
WAAS CH 58009 W11A	APP CRS 114°	Rwy Idg TDZE Apt Elev 7500 92 92
--	------------------------	--

RNAV (GPS) RWY 11

KETCHIKAN INTL (KTN)(PAKT)

RNP APCH-GPS.	MALSR	MISSED APPROACH: Climb to 5000 direct FESVA and on 150° track to ANN VOR/DME and hold.
NA For inoperative ALS, increase LPV DA visibility to RVR 6000.	AS	

AFIS 134.45	ANCHORAGE CENTER 118.5 284.6	KETCHIKAN RADIO 123.6 (CTAF)
-----------------------	--	--



MISSED APCH FIX ANNETTE ISLAND ANN 5 NM 120° 5000	Procedure Turn NA	JANEM	COSIL	WETOL	5000	FESVA	150° tr	ANN
	GP 3.00° TCH 50	4600	3000	2400	2400	RWY 11		
	CATEGORY	A	B	C	D			
	LPV DA	442/40			350 (400-3/4)	NA		

AK, 20 FEB 2025 to 17 APR 2025

AK, 20 FEB 2025 to 17 APR 2025