

WAAS CH 40142 W29A	APP CRS 295°	Rwy Idg TDZE Apt Elev	7500 92 92
--	------------------------	-----------------------------	---------------------------------------

RNAV (GPS) RWY 29

KETCHIKAN INTL (KTN)(PAKT)

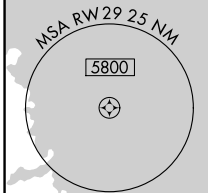
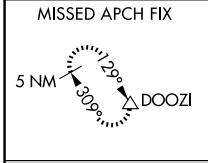
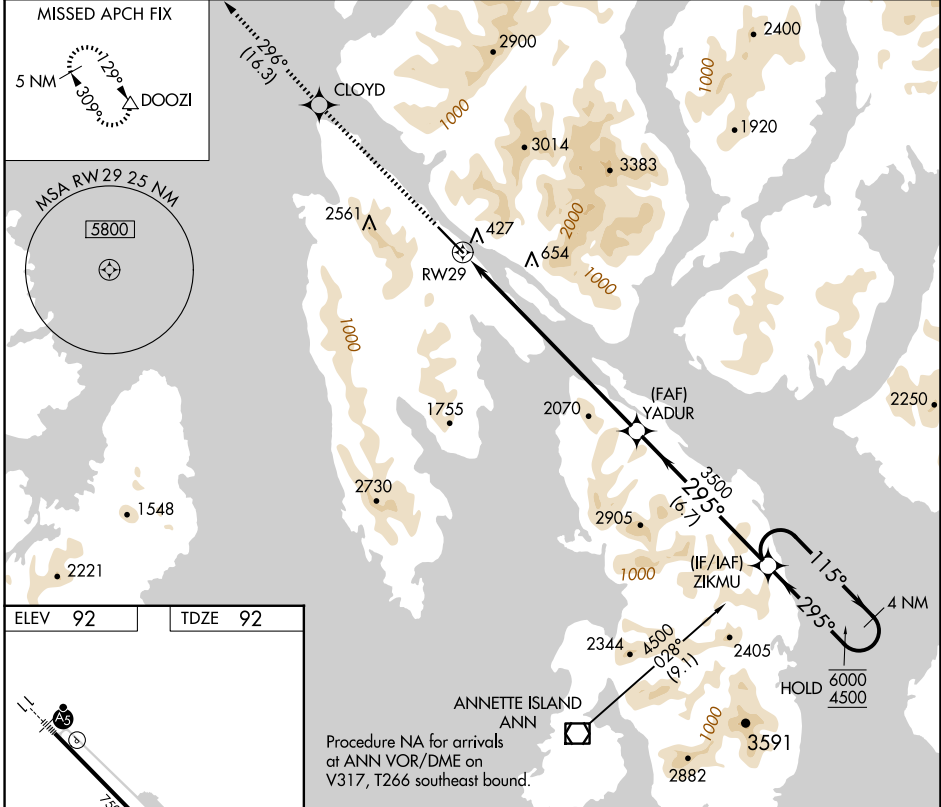
RNP APCH.

NA For inop ALS, increase all Cats visibility to 1¼ SM.

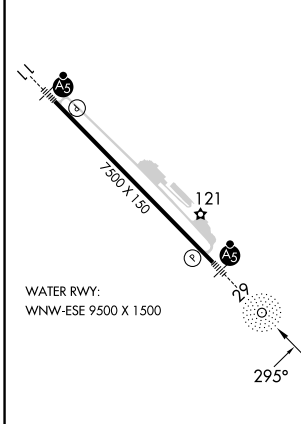


MISSED APPROACH: Climb to 5000 direct CLOYD and on track 296° to DOOZI and hold.
*Missed approach requires minimum climb of 425 feet per NM to 2160; If unable to meet climb gradient, see RNAV (GPS)-B.

AFIS 134.45	ANCHORAGE CENTER 118.5 284.6	KETCHIKAN RADIO 123.6 (CTAF) 0
-----------------------	--	--

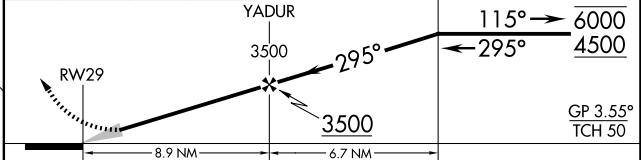


ELEV 92	TDZE 92
---------	---------



WATER RWY: WNW-ESE 9500 X 1500

5000	CLOYD	tr 296°	DOOZI	VGSI and RNAV glidepath not coincident (VGSI Angle 3.00/TCH 49).	4 NM Holding Pattern
------	-------	---------	-------	--	----------------------



CATEGORY	A	B	C	D
LPV DA*	722-1¾	630 (700-1¾)		NA

AK, 20 FEB 2025 to 17 APR 2025

AK, 20 FEB 2025 to 17 APR 2025