

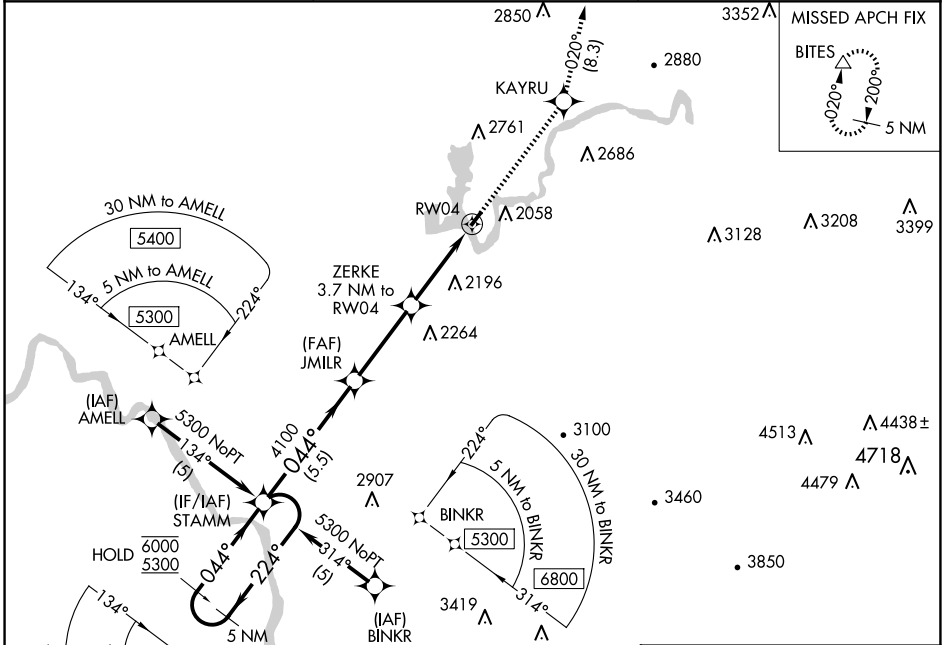
APP CRS	Rwy Idg	NA
044°	TDZE	NA
	Apt Elev	1820

RNAV (GPS)-A

SUMMERSVILLE (SXL)

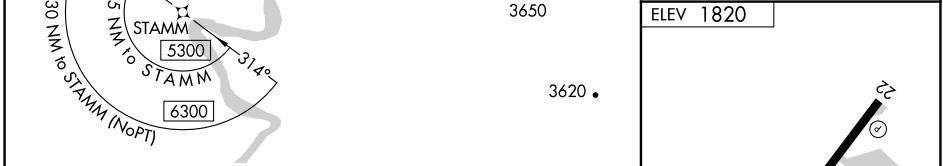
RNP APCH - GPS.		MISSED APPROACH: Climb to 4500 direct KAYRU and on track 020° to BITES and hold.
▼ NA	Procedure NA at night. Rwy 4 and 22 helicopter visibility reduction below 1 SM NA. Use CRW altimeter setting.	

CRW ASOS 127.6	CHARLESTON APP CON 119.2 269.125	UNICOM 122.8 (CTAF) 0
--------------------------	--	---------------------------------

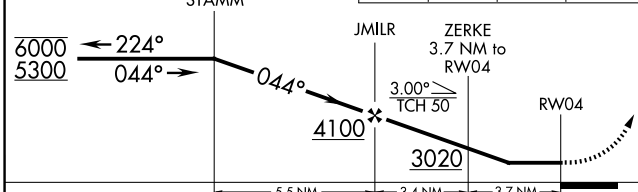


NE-4, 20 FEB 2025 to 20 MAR 2025

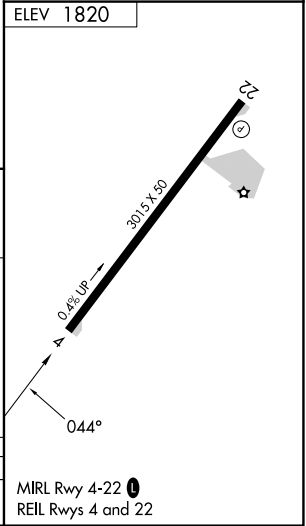
NE-4, 20 FEB 2025 to 20 MAR 2025



5 NM Holding Pattern	4500	KAYRU	tr 020°	BITES
----------------------	------	-------	---------	-------



CATEGORY	A	B	C	D
5 NM Holding Pattern	6000 5300	4100	3020	
	← 224°	044° →	044°	
		5.5 NM	3.4 NM	3.7 NM
CIRCLING	2640-1¼ 820 (900-1¼)	3020-1½ 1200 (1200-1½)	NA	



MIRL Rwy 4-22 0
REIL Rwy 4 and 22