

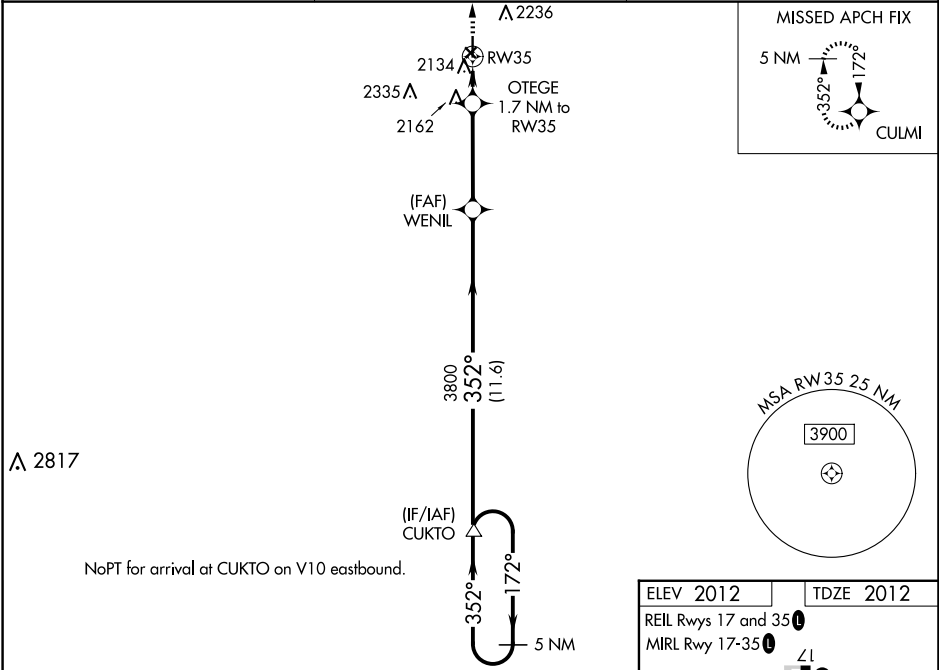
WAAS CH <b>82020</b> <b>W35A</b>	APP CRS <b>352°</b>	Rwy Idg TDZE Apt Elev	<b>4201</b> <b>2012</b> <b>2012</b>
--	------------------------	-----------------------------	---

# RNAV (GPS) RWY 35

LARNED-PAWNEE COUNTY (L.Q.R.)

RNP APCH.	<p>Baro-VNAV NA when using Great Bend altimeter setting. For uncompensated Baro-VNAV systems, LNAV/VNAV NA below -18°C or above 54°C. Rwy 35 helicopter visibility reduction below 1 SM NA. When local altimeter setting not received, use Great Bend altimeter setting and increase all DA 49 feet and LNAV/VNAV all Cats visibility 1/8 SM; increase all MDA 60 feet and increase LNAV Cat C and Circling Cat C visibility 1/4 SM. Circling NA to Rwy 4, 12, 22 and 30. Procedure NA at night.</p>	<p><b>MISSED APPROACH:</b> Climb to 4500 direct CULMI and hold.</p>
-----------	--	---

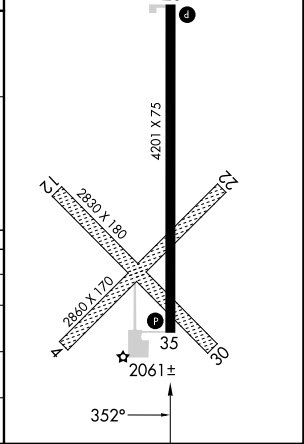
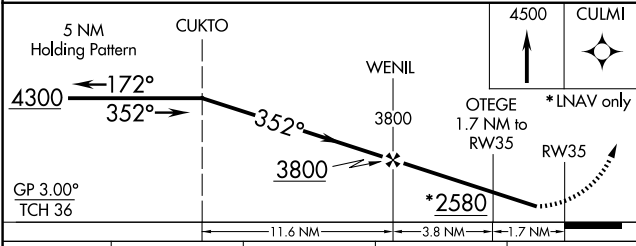
AWOS-2 <b>119.875</b>	KANSAS CITY CENTER <b>124.4 322.4</b>	UNICOM <b>122.8 (CTAF) 0</b>
--------------------------	--	---------------------------------



A 2817

NoPT for arrival at CUKTO on V10 eastbound.

ELEV 2012	TDZE 2012
REIL Rwy 17 and 35 0	
MIRL Rwy 17-35 0	



CATEGORY	A	B	C	D
LPV DA	2262-1	250 (300-1)		NA
LNAV/VNAV DA	2337-1 1/8	325 (400-1 1/8)		NA
LNAV MDA	2420-1	408 (500-1)	2420-1 1/2 408 (500-1 1/2)	NA
CIRCLING	2500-1 488 (500-1)	2600-1 588 (600-1)	2640-1 3/4 628 (700-1 3/4)	NA

NC-2, 20 FEB 2025 to 20 MAR 2025

NC-2, 20 FEB 2025 to 20 MAR 2025