

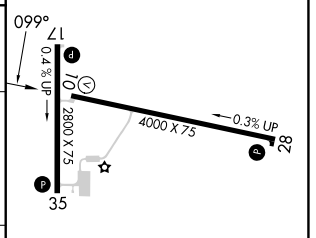
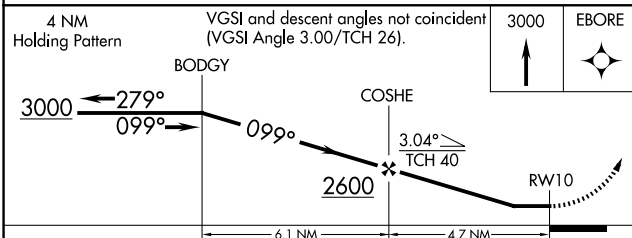
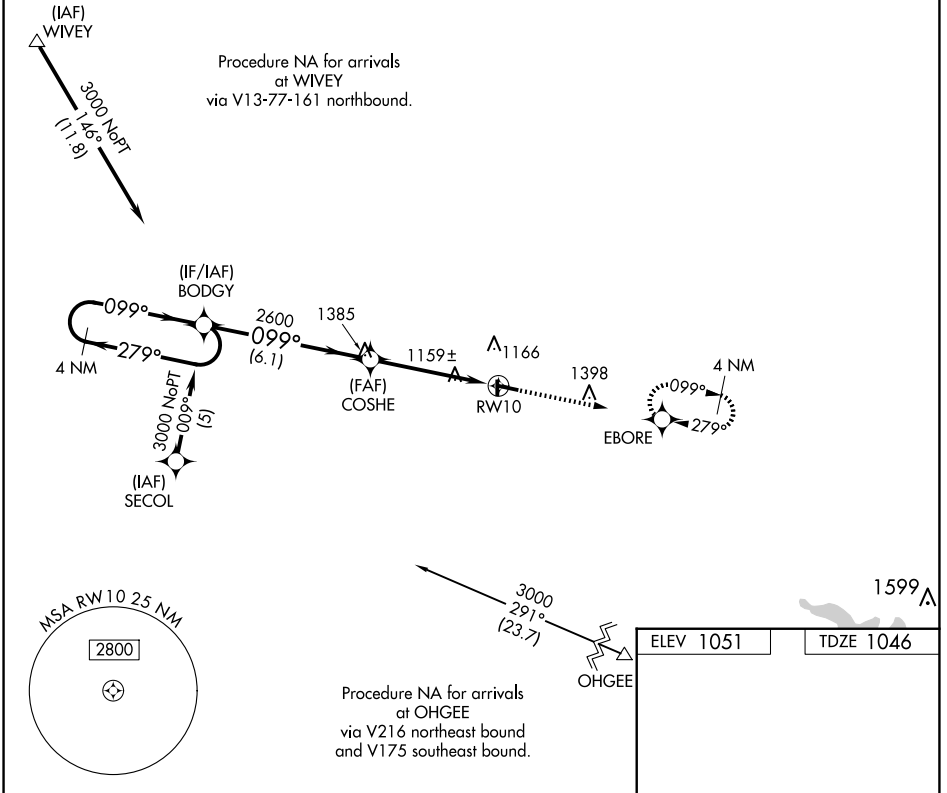
APP CRS	Rwy Idg	<b>4000</b>
<b>099°</b>	TDZE	<b>1046</b>
	Apt Elev	<b>1051</b>

# RNAV (GPS) RWY 10

CHARITON MUNI (CNC)

RNP APCH.	When local altimeter setting not received, use Lomoni altimeter setting and increase all MDA 100 feet. Procedure NA at night. Rwy 10 helicopter visibility reduction below 1 SM NA.	MISSED APPROACH: Climb to 3000 direct EBORE and hold.
-----------	---	--

AWOS-3 <b>125.525</b>	DES MOINES APP CON <b>123.9 360.7</b>	UNICOM <b>122.8 (CTAF) 0</b>
--------------------------	--	---------------------------------



CATEGORY	A	B	C	D
RNAV MDA	1440-1	394 (400-1)		NA
CIRCLING	1540-1	489 (500-1)		NA

REIL Rwy 10, 17, 28 and 35 0

MIRL Rwy 10-28 and 17-35 0

NC-3, 20 FEB 2025 to 20 MAR 2025

NC-3, 20 FEB 2025 to 20 MAR 2025