

|             |          |             |
|-------------|----------|-------------|
| APP CRS     | Rwy Idg  | <b>2801</b> |
| <b>019°</b> | TDZE     | <b>1116</b> |
|             | Apt Elev | <b>1116</b> |

# RNAV (GPS) RWY 2

JAMES G WHITING MEML FLD (MEY)

RNP APCH - GPS.

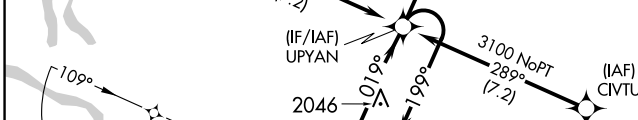
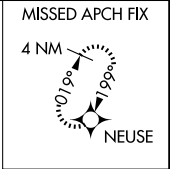
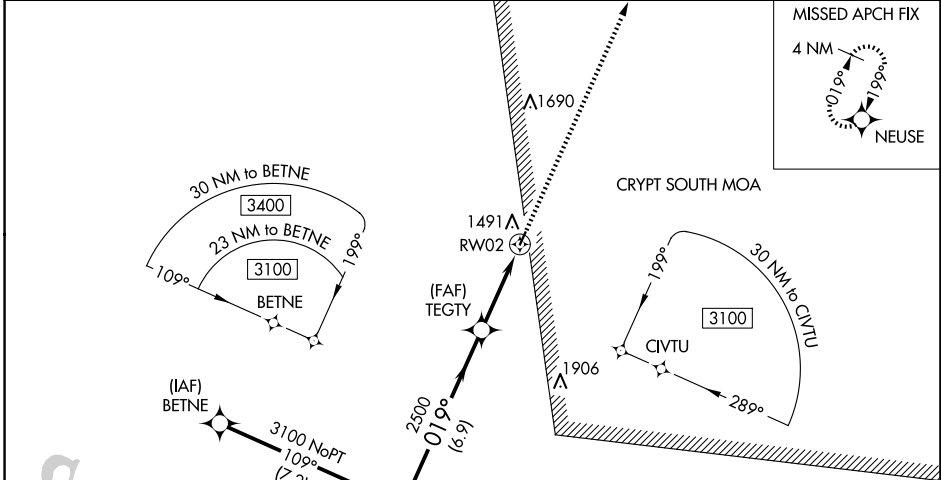
**NA** Procedure NA at night. Rwy 2 helicopter visibility reduction below 1 SM NA. Use Sioux City altimeter setting, when not received use Denison altimeter setting and increase all MDAs 20 feet and visibility LNAV Cat B ¼ SM, and visibility Circling Cat C ¼ SM.

MISSED APPROACH: Climb to 3200 direct NEUSE and hold.

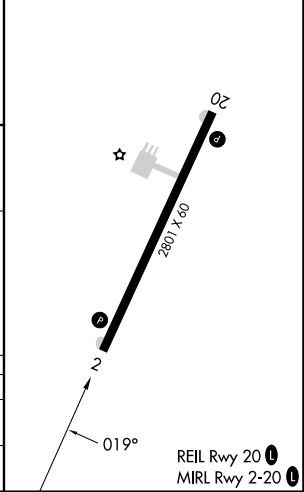
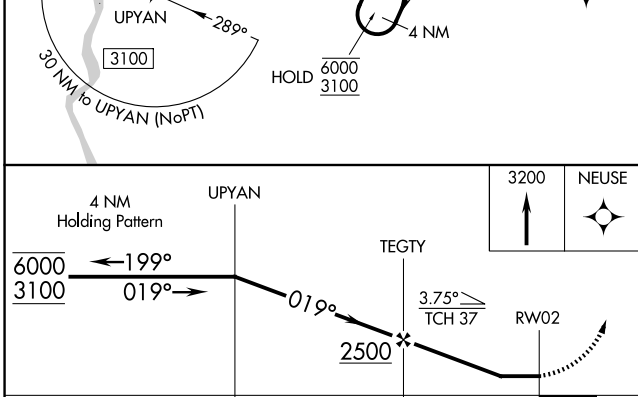
SUX ASOS  
**119.45 270.8**

SIOUX CITY APP CON ★  
**124.6 307.0**

UNICOM  
**122.8 (CTAF) 0**



|           |           |
|-----------|-----------|
| ELEV 1116 | TDZE 1116 |
|-----------|-----------|



| CATEGORY          | A                     | B                       | C                       | D  |
|-------------------|-----------------------|-------------------------|-------------------------|----|
| LNAV MDA          | 1840-1                | 724 (800-1)             | 1840-2<br>724 (800-2)   | NA |
| <b>C</b> CIRCLING | 1880-1<br>764 (800-1) | 1940-1¼<br>824 (900-1¼) | 1980-2½<br>864 (900-2½) | NA |

NC-3, 20 FEB 2025 to 20 MAR 2025

NC-3, 20 FEB 2025 to 20 MAR 2025