

APP CRS	Rwy Idg	<b>6008</b>
<b>170°</b>	TDZE	<b>305</b>
	Apt Elev	<b>314</b>

# RNAV (GPS) RWY 17

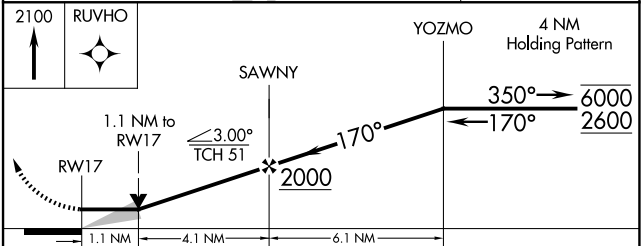
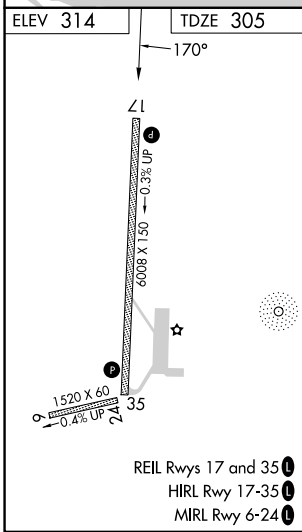
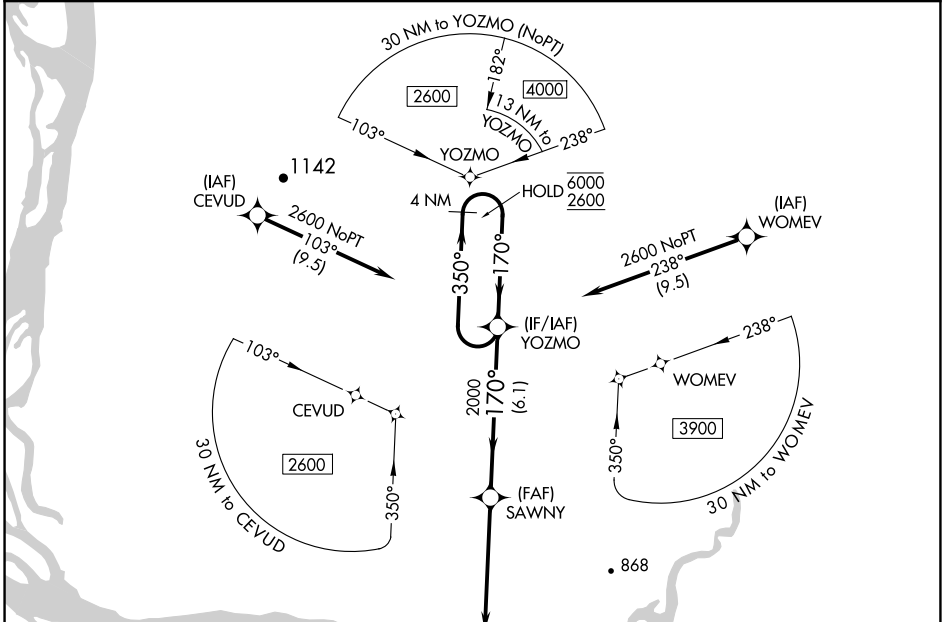
ST MARY'S (KSM)(PASM)

RNP APCH-GPS.

**⚠** Circling to Rwy 6 NA at night. Circling NA east of Rwy 17-35. Inop table does not apply.

MISSED APPROACH: Climb to 2100 direct RUVHO and hold.

AWOS-3P <b>128.7</b>	ANCHORAGE CENTER <b>124.0</b>	CTAF <b>122.3</b>
-------------------------	----------------------------------	----------------------



CATEGORY	A	B	C	D
LNAV MDA	700-1 395 (400-1)		700-1½ 395 (400-1½)	
<input checked="" type="checkbox"/> CIRCLING	820-1 506 (600-1)		820-1½ 506 (600-1½)	880-2 566 (600-2)

AK, 20 FEB 2025 to 17 APR 2025

AK, 20 FEB 2025 to 17 APR 2025