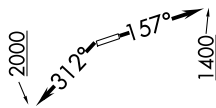


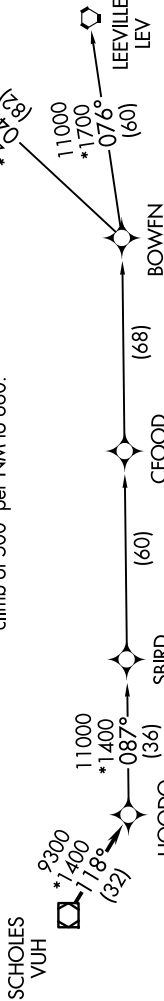
SC-5, 20 FEB 2025 to 20 MAR 2025

AWOS-3
 119.325
 CTAF
 123.0
 HOUSTON DEP CON
 119.7 281.4



- NOTE: RNAV 1.
- NOTE: RADAR required.
- NOTE: ATC assigned only.
- NOTE: DME/DME/IRU or GPS required.
- NOTE: For non-GPS equipped aircraft, LCH, LLA, TBD, and LEV DME's must be operational.

TAKEOFF MINIMUMS
 Rwy's 16, 34: Standard with minimum
 climb of 500' per NM to 660.



**TOP ALTITUDE:
 ASSIGNED BY ATC**

NOTE: Chart not to scale.

DEPARTURE ROUTE DESCRIPTION

TAKEOFF RUNWAY 16: Climb on heading 157° to 1400, for RADAR vectors to VUH VOR/DME, thence
TAKEOFF RUNWAY 34: Climb on heading 312° to 2000, for RADAR vectors to VUH VOR/DME, thence

. . . . on track 118° to HOODO, then on (transition). Maintain ATC assigned altitude.
 Expect filed altitude 10 minutes after departure.

- BOWFN TRANSITION (HOODO7.BOWFN)
- CFOOD TRANSITION (HOODO7.CFOOD)
- HARVEY TRANSITION (HOODO7.HRV)
- LEEVILLE TRANSITION (HOODO7.LEV)
- SBIRD TRANSITION (HOODO7.SBIRD)

SC-5, 20 FEB 2025 to 20 MAR 2025