

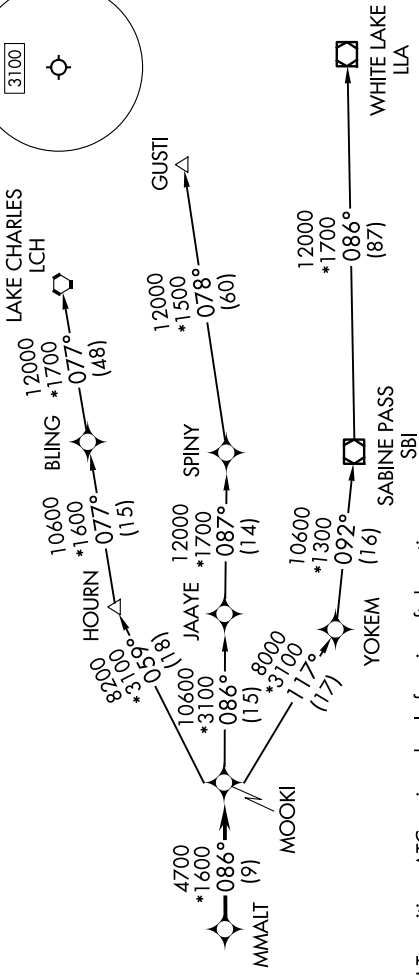
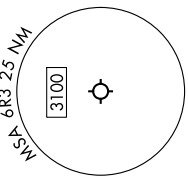
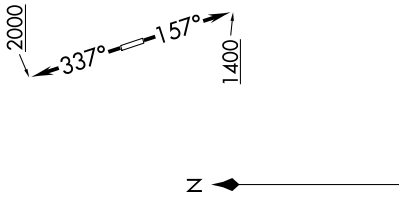
# MMALT SEVEN DEPARTURE (RNAV)

SC-5, 20 FEB 2025 to 20 MAR 2025

HOUSTON DEP CON  
119.7 281.4  
AWOS-3  
119.325  
CTAF  
123.0

RNAV 1 - DME/DME/IRU or GPS.  
RADAR required.

TOP ALTITUDE:  
ASSIGNED BY ATC



NOTE: GUSTI and LCH Transitions ATC assigned only for aircraft departing AXH, EFD, GLS, HPY, IWS, LBX, LVJ, SGR, TME, T00, T41 and 54T.

**TAKEOFF MINIMUMS**  
Rwy 16: Standard with minimum climb of 500'/NM to 660.  
Rwy 34: Standard with minimum climb of 500'/NM to 1000.

### DEPARTURE ROUTE DESCRIPTION

TAKEOFF RUNWAY 16: Climb on heading 157° to 1400, for RADAR vectors to MMALT, thence...  
TAKEOFF RUNWAY 34: Climb on heading 337° to 2000, for RADAR vectors to MMALT, thence...  
... on track 086° to MOOKI, then on (transition). Maintain ATC assigned altitude.  
Expect filed altitude 10 minutes after departure.

GUSTI TRANSITION (MMALT7.GUSTI)  
LAKE CHARLES TRANSITION (MMALT7.LCH)  
WHITE LAKE TRANSITION (MMALT7.LLA)

NOTE: Chart not to scale.

SC-5, 20 FEB 2025 to 20 MAR 2025